

ITGA7 Antibody (monoclonal) (M01)

Mouse monoclonal antibody raised against a partial recombinant ITGA7.

Catalog # AT2566a

Product Information

Application	WB, E
Primary Accession	Q13683
Other Accession	NM_002206
Reactivity	Human
Host	mouse
Clonality	monoclonal
Isotype	IgG2a Kappa
Clone Names	8G2
Calculated MW	128948

Additional Information

Gene ID	3679
Other Names	Integrin alpha-7, Integrin alpha-7 heavy chain, Integrin alpha-7 light chain, Integrin alpha-7 70 kDa form, ITGA7
Target/Specificity	ITGA7 (NP_002197, 478 a.a. ~ 577 a.a) partial recombinant protein with GST tag. MW of the GST tag alone is 26 KDa.
Dilution	WB~~1:500~1000 E~~N/A
Format	Clear, colorless solution in phosphate buffered saline, pH 7.2 .
Storage	Store at -20°C or lower. Aliquot to avoid repeated freezing and thawing.
Precautions	ITGA7 Antibody (monoclonal) (M01) is for research use only and not for use in diagnostic or therapeutic procedures.

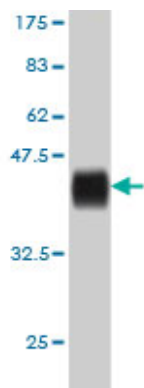
Background

The protein encoded by this gene belongs to the integrin alpha chain family. Integrins are heterodimeric integral membrane proteins composed of an alpha chain and a beta chain. They mediate a wide spectrum of cell-cell and cell-matrix interactions, and thus play a role in cell migration, morphologic development, differentiation, and metastasis. This protein functions as a receptor for the basement membrane protein laminin-1. It is mainly expressed in skeletal and cardiac muscles and may be involved in differentiation and migration processes during myogenesis. Defects in this gene are associated with congenital myopathy. Alternatively spliced transcript variants encoding different isoforms have been noted for this gene.

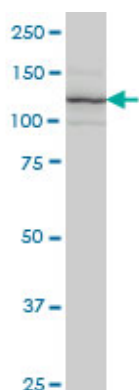
References

Interaction of integrin-linked kinase and miniature chromosome maintenance 7-mediating integrin $\alpha 7$ induced cell growth suppression. Han YC, et al. Cancer Res, 2010 Jun 1. PMID 20460506. A Large-scale genetic association study of esophageal adenocarcinoma risk. Liu CY, et al. Carcinogenesis, 2010 Jul. PMID 20453000. Laminin-111 protein therapy prevents muscle disease in the mdx mouse model for Duchenne muscular dystrophy. Rooney JE, et al. Proc Natl Acad Sci U S A, 2009 May 12. PMID 19416897. Genetically determined proteolytic cleavage modulates $\alpha 7 \beta 1$ integrin function. Liu J, et al. J Biol Chem, 2008 Dec 19. PMID 18940796. Toward a confocal subcellular atlas of the human proteome. Barbe L, et al. Mol Cell Proteomics, 2008 Mar. PMID 18029348.

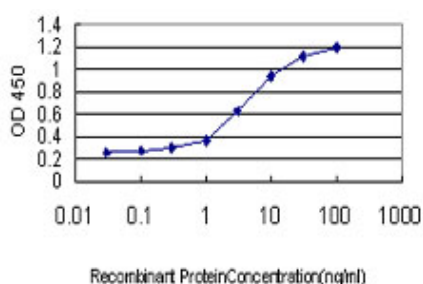
Images



Antibody Reactive Against Recombinant Protein. Western Blot detection against Immunogen (36.74 KDa) .



ITGA7 monoclonal antibody (M01), clone 8G2 Western Blot analysis of ITGA7 expression in Jurkat (Cat # AT2566a)



Detection limit for recombinant GST tagged ITGA7 is approximately 0.1 ng/ml as a capture antibody.

Please note: All products are 'FOR RESEARCH USE ONLY. NOT FOR USE IN DIAGNOSTIC OR THERAPEUTIC PROCEDURES'.