

ITGB5 Antibody (monoclonal) (M01)

Mouse monoclonal antibody raised against a partial recombinant ITGB5.

Catalog # AT2570a

Product Information

Application	WB, E
Primary Accession	P18084
Other Accession	NM_002213
Reactivity	Human
Host	mouse
Clonality	monoclonal
Isotype	IgG1 Kappa
Clone Names	2C4
Calculated MW	88054

Additional Information

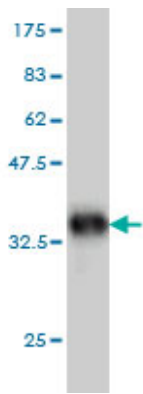
Gene ID	3693
Other Names	Integrin beta-5, ITGB5
Target/Specificity	ITGB5 (NP_002204, 421 a.a. ~ 516 a.a) partial recombinant protein with GST tag. MW of the GST tag alone is 26 KDa.
Dilution	WB~~1:500~1000 E~~N/A
Format	Clear, colorless solution in phosphate buffered saline, pH 7.2 .
Storage	Store at -20°C or lower. Aliquot to avoid repeated freezing and thawing.
Precautions	ITGB5 Antibody (monoclonal) (M01) is for research use only and not for use in diagnostic or therapeutic procedures.

References

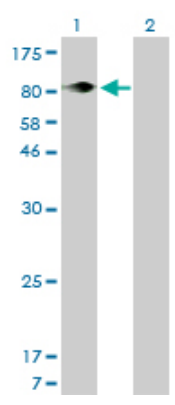
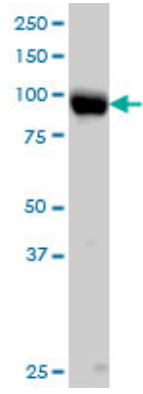
1. beta5 integrin is the major contributor to the ?V integrin-mediated blockade of HIV-1 replication. Ballana E, Pauls E, Clotet B, Perron-Sierra F, Tucker GC, Este JA. J Immunol. 2011 Jan 1;186(1):464-70. Epub 2010 Nov 22.

Images

Antibody Reactive Against Recombinant Protein. Western Blot detection against Immunogen (36.3 KDa) .

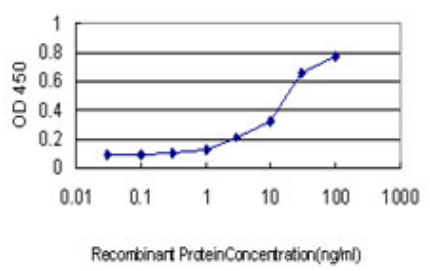


ITGB5 monoclonal antibody (M01), clone 2C4 Western Blot analysis of ITGB5 expression in HeLa (Cat # AT2570a)

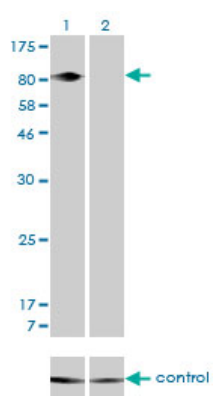


Western Blot analysis of ITGB5 expression in transfected 293T cell line by ITGB5 monoclonal antibody (M01), clone 2C4.

Lane 1: ITGB5 transfected lysate(88.1 KDa).
Lane 2: Non-transfected lysate.



Detection limit for recombinant GST tagged ITGB5 is approximately 0.3ng/ml as a capture antibody.



Western blot analysis of ITGB5 over-expressed 293 cell line, cotransfected with ITGB5 Validated Chimera RNAi (Cat # AT2570a)

Please note: All products are 'FOR RESEARCH USE ONLY. NOT FOR USE IN DIAGNOSTIC OR THERAPEUTIC PROCEDURES'.