

ITM1 Antibody (monoclonal) (M02)

Mouse monoclonal antibody raised against a partial recombinant ITM1.

Catalog # AT2572a

Product Information

Application	WB, IHC, E
Primary Accession	P46977
Other Accession	NM_152713
Reactivity	Human
Host	Mouse
Clonality	monoclonal
Isotype	IgG1 Kappa
Clone Names	4D4
Calculated MW	80530

Additional Information

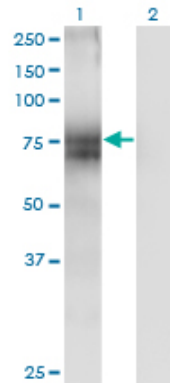
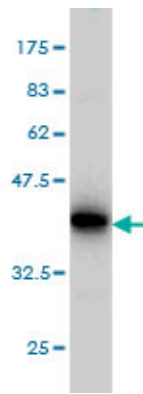
Gene ID	3703
Other Names	Dolichyl-diphosphooligosaccharide--protein glycosyltransferase subunit STT3A, Oligosaccharyl transferase subunit STT3A, STT3-A, B5, Integral membrane protein 1, Transmembrane protein TMC, STT3A, ITM1, TMC
Target/Specificity	ITM1 (NP_689926, 603 a.a. ~ 701 a.a) partial recombinant protein with GST tag. MW of the GST tag alone is 26 KDa.
Dilution	WB~~1:500~1000 IHC~~1:100~500 E~~N/A
Format	Clear, colorless solution in phosphate buffered saline, pH 7.2 .
Storage	Store at -20°C or lower. Aliquot to avoid repeated freezing and thawing.
Precautions	ITM1 Antibody (monoclonal) (M02) is for research use only and not for use in diagnostic or therapeutic procedures.

References

1.Keratinocyte-associated protein 2 is a bona fide subunit of the mammalian oligosaccharyltransferase.Roboti P, High S.J Cell Sci. 2012 Jan 1;125(Pt 1):220-32. Epub 2012 Jan 20.

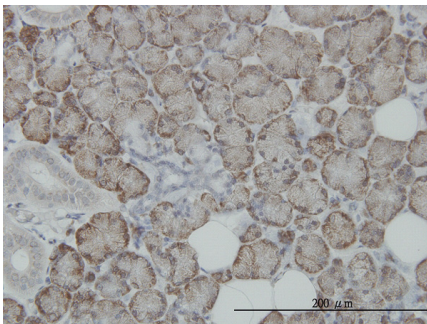
Images

Antibody Reactive Against Recombinant Protein.Western Blot detection against Immunogen (36.63 KDa) .

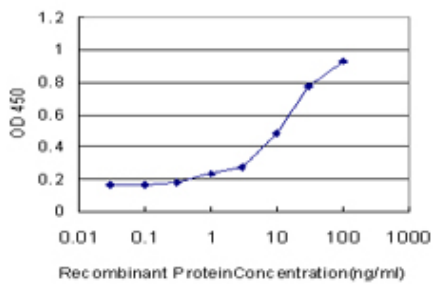


Western Blot analysis of ITM1 expression in transfected 293T cell line by ITM1 monoclonal antibody (M02), clone 4D4.

Lane 1: ITM1 transfected lysate(80.5 KDa).
Lane 2: Non-transfected lysate.



Immunoperoxidase of monoclonal antibody to ITM1 on formalin-fixed paraffin-embedded human salivary gland. [antibody concentration 3 ug/ml]



Detection limit for recombinant GST tagged ITM1 is approximately 1ng/ml as a capture antibody.

Please note: All products are 'FOR RESEARCH USE ONLY. NOT FOR USE IN DIAGNOSTIC OR THERAPEUTIC PROCEDURES'.