

# ITPK1 Antibody (monoclonal) (M01)

Mouse monoclonal antibody raised against a full length recombinant ITPK1.

Catalog # AT2573a

## Product Information

---

<b>Application</b>	WB, E
<b>Primary Accession</b>	<a href="#">Q13572</a>
<b>Other Accession</b>	<a href="#">BC003622</a>
<b>Reactivity</b>	Human
<b>Host</b>	mouse
<b>Clonality</b>	monoclonal
<b>Isotype</b>	IgG3 Kappa
<b>Clone Names</b>	2C8
<b>Calculated MW</b>	45621

## Additional Information

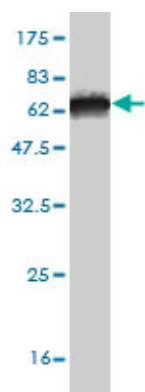
---

<b>Gene ID</b>	3705
<b>Other Names</b>	Inositol-tetrakisphosphate 1-kinase, Inositol 1, 4-trisphosphate 5/6-kinase, Inositol-triphosphate 5/6-kinase, Ins(1, 4)P(3) 5/6-kinase, ITPK1
<b>Target/Specificity</b>	ITPK1 (AAH03622, 1 a.a. ~ 314 a.a) full-length recombinant protein with GST tag. MW of the GST tag alone is 26 KDa.
<b>Dilution</b>	WB~~1:500~1000 E~~N/A
<b>Format</b>	Clear, colorless solution in phosphate buffered saline, pH 7.2 .
<b>Storage</b>	Store at -20°C or lower. Aliquot to avoid repeated freezing and thawing.
<b>Precautions</b>	ITPK1 Antibody (monoclonal) (M01) is for research use only and not for use in diagnostic or therapeutic procedures.

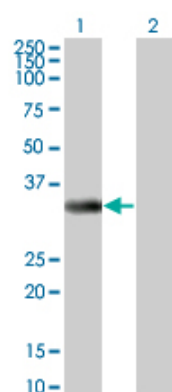
## References

---

Personalized smoking cessation: interactions between nicotine dose, dependence and quit-success genotype score. Rose JE, et al. Mol Med, 2010 Jul-Aug. PMID 20379614.Association of genetic variants with hemorrhagic stroke in Japanese individuals. Yoshida T, et al. Int J Mol Med, 2010 Apr. PMID 20198315.Assessment of a polymorphism of SDK1 with hypertension in Japanese Individuals. Oguri M, et al. Am J Hypertens, 2010 Jan. PMID 19851296.Association of gene polymorphisms with chronic kidney disease in Japanese individuals. Yoshida T, et al. Int J Mol Med, 2009 Oct. PMID 19724895.Integration of inositol phosphate signaling pathways via human ITPK1. Chamberlain PP, et al. J Biol Chem, 2007 Sep 21. PMID 17616525.

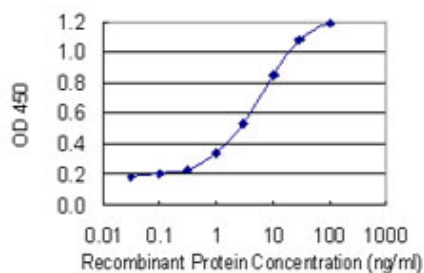


Antibody Reactive Against Recombinant Protein. Western Blot detection against Immunogen (60.28 KDa) .

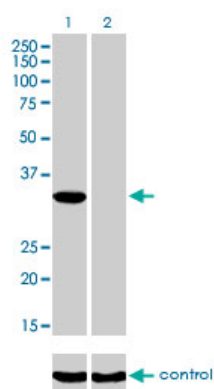


Western Blot analysis of ITPK1 expression in transfected 293T cell line by ITPK1 monoclonal antibody (M01), clone 2C8.

Lane 1: ITPK1 transfected lysate(35.6 KDa).  
Lane 2: Non-transfected lysate.



Detection limit for recombinant GST tagged ITPK1 is 0.1 ng/ml as a capture antibody.



Western blot analysis of ITPK1 over-expressed 293 cell line, cotransfected with ITPK1 Validated Chimera RNAi (Cat # AT2573a )

Please note: All products are 'FOR RESEARCH USE ONLY. NOT FOR USE IN DIAGNOSTIC OR THERAPEUTIC PROCEDURES'.