

JMJD1C Antibody (monoclonal) (M03)

Mouse monoclonal antibody raised against a partial recombinant JMJD1C.

Catalog # AT2582a

Product Information

Application	WB, IHC, E
Primary Accession	Q15652
Other Accession	NM_004241
Reactivity	Human
Host	mouse
Clonality	monoclonal
Isotype	IgG2a Kappa
Clone Names	5F12
Calculated MW	284525

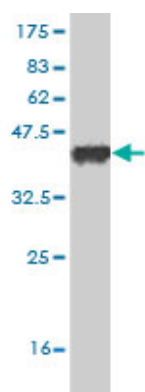
Additional Information

Gene ID	221037
Other Names	Probable JmjC domain-containing histone demethylation protein 2C, 11411-, Jumonji domain-containing protein 1C, Thyroid receptor-interacting protein 8, TR-interacting protein 8, TRIP-8, JMJD1C, JHDM2C, KIAA1380, TRIP8
Target/Specificity	JMJD1C (NP_004232, 2 a.a. ~ 99 a.a) partial recombinant protein with GST tag. MW of the GST tag alone is 26 KDa.
Dilution	WB~~1:500~1000 IHC~~1:100~500 E~~N/A
Format	Clear, colorless solution in phosphate buffered saline, pH 7.2 .
Storage	Store at -20°C or lower. Aliquot to avoid repeated freezing and thawing.
Precautions	JMJD1C Antibody (monoclonal) (M03) is for research use only and not for use in diagnostic or therapeutic procedures.

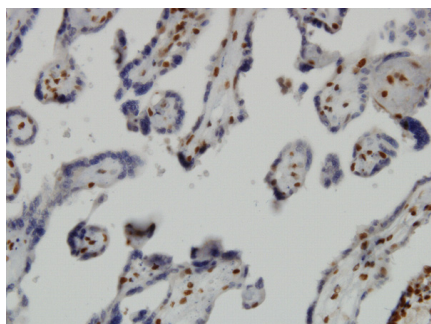
References

PNPLA3 variants specifically confer increased risk for histologic nonalcoholic fatty liver disease but not metabolic disease. Speliotes EK, et al. Hepatology, 2010 Sep. PMID 20648472. Genome-wide meta-analysis identifies seven loci associated with platelet aggregation in response to agonists. Johnson AD, et al. Nat Genet, 2010 Jul. PMID 20526338. Personalized smoking cessation: interactions between nicotine dose, dependence and quit-success genotype score. Rose JE, et al. Mol Med, 2010 Jul-Aug. PMID 20379614. Forty-three loci associated with plasma lipoprotein size, concentration, and cholesterol content in genome-wide analysis. Chasman DI, et al. PLoS Genet, 2009 Nov. PMID 19936222. A genome-wide meta-analysis identifies 22 loci associated with eight hematological parameters in the HaemGen consortium.

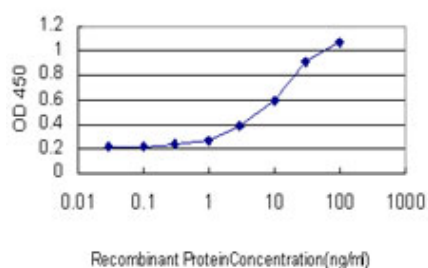
Images



Antibody Reactive Against Recombinant Protein. Western Blot detection against Immunogen (36.52 KDa) .



Immunoperoxidase of monoclonal antibody to JMJD1C on formalin-fixed paraffin-embedded human placenta. [antibody concentration 3 ug/ml]



Detection limit for recombinant GST tagged JMJD1C is approximately 0.3ng/ml as a capture antibody.

Please note: All products are 'FOR RESEARCH USE ONLY. NOT FOR USE IN DIAGNOSTIC OR THERAPEUTIC PROCEDURES'.