

# KAL1 Antibody (monoclonal) (M01)

Mouse monoclonal antibody raised against a partial recombinant KAL1.

Catalog # AT2588a

## Product Information

---

<b>Application</b>	WB, E
<b>Primary Accession</b>	<a href="#">P23352</a>
<b>Other Accession</b>	<a href="#">NM_000216</a>
<b>Reactivity</b>	Human
<b>Host</b>	mouse
<b>Clonality</b>	monoclonal
<b>Isotype</b>	IgG2a Kappa
<b>Clone Names</b>	2E9
<b>Calculated MW</b>	76112

## Additional Information

---

<b>Gene ID</b>	3730
<b>Other Names</b>	Anosmin-1, Adhesion molecule-like X-linked, Kallmann syndrome protein, KAL1, ADMLX, KAL, KALIG1
<b>Target/Specificity</b>	KAL1 (NP_000207, 548 a.a. ~ 657 a.a) partial recombinant protein with GST tag. MW of the GST tag alone is 26 KDa.
<b>Dilution</b>	WB~~1:500~1000 E~~N/A
<b>Format</b>	Clear, colorless solution in phosphate buffered saline, pH 7.2 .
<b>Storage</b>	Store at -20°C or lower. Aliquot to avoid repeated freezing and thawing.
<b>Precautions</b>	KAL1 Antibody (monoclonal) (M01) is for research use only and not for use in diagnostic or therapeutic procedures.

## Background

---

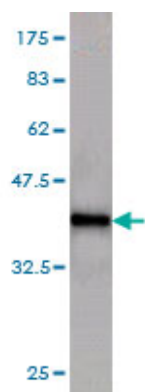
Mutations in this gene cause the X-linked Kallmann syndrome. The encoded protein is similar in sequence to proteins known to function in neural cell adhesion and axonal migration. In addition, this cell surface protein is N-glycosylated and may have anti-protease activity.

## References

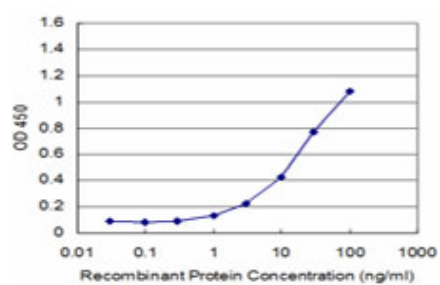
---

1.Keratinocyte-derived anosmin-1, an extracellular glycoprotein encoded by the X-linked Kallmann syndrome gene, is involved in modulation of epidermal nerve density in atopic dermatitis.Tengara S, Tominaga M, Kamo A, Taneda K, Negi O, Ogawa H, Takamori K.J Dermatol Sci. 2010 Apr;58(1):64-71. Epub 2010 Feb 20.

## Images



Antibody Reactive Against Recombinant Protein. Western Blot detection against Immunogen (37.84 KDa) .



Detection limit for recombinant GST tagged KAL1 is approximately 1ng/ml as a capture antibody.

Please note: All products are 'FOR RESEARCH USE ONLY. NOT FOR USE IN DIAGNOSTIC OR THERAPEUTIC PROCEDURES'.