

KHDRBS1 Antibody (monoclonal) (M03)

Mouse monoclonal antibody raised against a partial recombinant KHDRBS1.

Catalog # AT2607a

Product Information

Application	WB, IHC, IF, E
Primary Accession	Q07666
Other Accession	BC000717
Reactivity	Human
Host	mouse
Clonality	monoclonal
Isotype	IgG2a Kappa
Clone Names	1A4
Calculated MW	48227

Additional Information

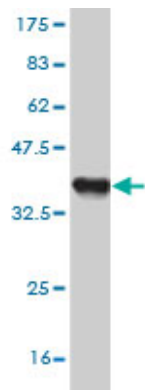
Gene ID	10657
Other Names	KH domain-containing, RNA-binding, signal transduction-associated protein 1, GAP-associated tyrosine phosphoprotein p62, Src-associated in mitosis 68 kDa protein, Sam68, p21 Ras GTPase-activating protein-associated p62, p68, KHDRBS1 (HGNC:18116)
Target/Specificity	KHDRBS1 (AAH00717, 176 a.a. ~ 275 a.a) partial recombinant protein with GST tag. MW of the GST tag alone is 26 KDa.
Dilution	WB~~1:500~1000 IHC~~1:100~500 IF~~1:50~200 E~~N/A
Format	Clear, colorless solution in phosphate buffered saline, pH 7.2 .
Storage	Store at -20°C or lower. Aliquot to avoid repeated freezing and thawing.
Precautions	KHDRBS1 Antibody (monoclonal) (M03) is for research use only and not for use in diagnostic or therapeutic procedures.

References

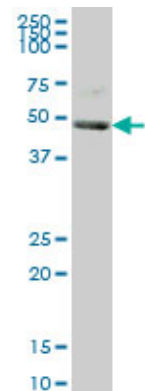
The splicing regulator Sam68 binds to a novel exonic splicing silencer and functions in SMN2 alternative splicing in spinal muscular atrophy. Pedrotti S, et al. EMBO J, 2010 Apr 7. PMID 20186123.Sam68 sequestration and partial loss of function are associated with splicing alterations in FXTAS patients. Sellier C, et al. EMBO J, 2010 Apr 7. PMID 20186122.Alternative splicing of the cyclin D1 proto-oncogene is regulated by the RNA-binding protein Sam68. Paronetto MP, et al. Cancer Res, 2010 Jan 1. PMID 20028857.Proteomic identification of heterogeneous nuclear ribonucleoprotein L as a novel component of SLM/Sam68 Nuclear Bodies. Rajan P, et al. BMC Cell Biol, 2009 Nov 13. PMID 19912651.Expression and cytoplasmic localization

of SAM68 is a significant and independent prognostic marker for renal cell carcinoma. Zhang Z, et al. Cancer Epidemiol Biomarkers Prev, 2009 Oct. PMID 19755649.

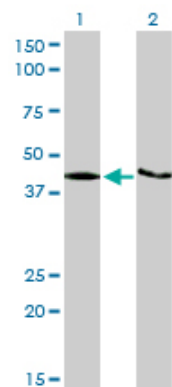
Images



Antibody Reactive Against Recombinant Protein.Western Blot detection against Immunogen (36.63 KDa) .

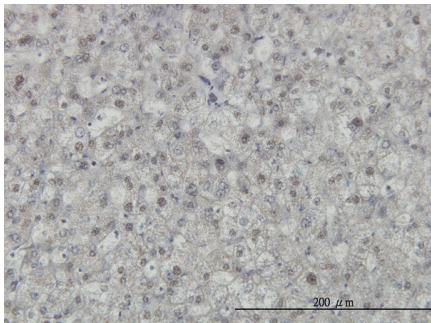


KHDRBS1 monoclonal antibody (M03), clone 1A4 Western Blot analysis of KHDRBS1 expression in A-431 ((Cat # AT2607a)



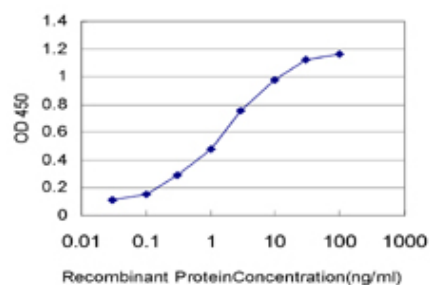
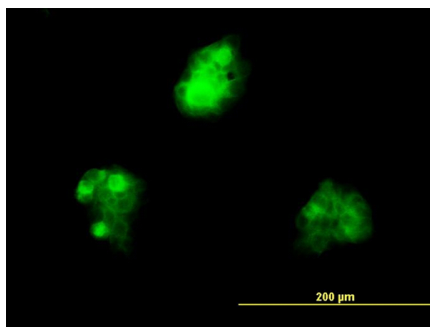
Western Blot analysis of KHDRBS1 expression in transfected 293T cell line by KHDRBS1 monoclonal antibody (M03), clone 1A4.

Lane 1: KHDRBS1 transfected lysate(41 KDa).
Lane 2: Non-transfected lysate.



Immunoperoxidase of monoclonal antibody to KHDRBS1 on formalin-fixed paraffin-embedded human liver. [antibody concentration 3 ug/ml]

Immunofluorescence of monoclonal antibody to KHDRBS1 on A-431 cell. [antibody concentration 10 ug/ml]



Detection limit for recombinant GST tagged KHDRBS1 is approximately 0.03ng/ml as a capture antibody.

Please note: All products are 'FOR RESEARCH USE ONLY. NOT FOR USE IN DIAGNOSTIC OR THERAPEUTIC PROCEDURES'.