

KIAA1510 Antibody (monoclonal) (M01)

Mouse monoclonal antibody raised against a full length recombinant KIAA1510.

Catalog # AT2614a

Product Information

Application	E
Primary Accession	Q9P218
Other Accession	BC019637
Reactivity	Human
Host	mouse
Clonality	monoclonal
Isotype	IgG1 kappa
Clone Names	1F5
Calculated MW	135830

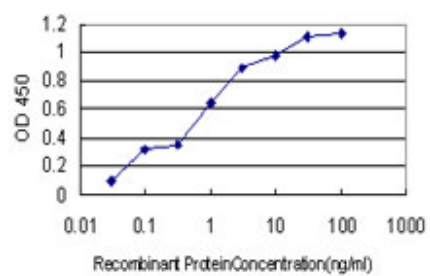
Additional Information

Gene ID	57642
Other Names	Collagen alpha-1(XX) chain, COL20A1, KIAA1510
Target/Specificity	KIAA1510 (AAH19637, 1 a.a. ~ 155 a.a) full-length recombinant protein with GST tag. MW of the GST tag alone is 26 KDa.
Dilution	E~~N/A
Format	Clear, colorless solution in phosphate buffered saline, pH 7.2 .
Storage	Store at -20°C or lower. Aliquot to avoid repeated freezing and thawing.
Precautions	KIAA1510 Antibody (monoclonal) (M01) is for research use only and not for use in diagnostic or therapeutic procedures.

References

Towards a proteome-scale map of the human protein-protein interaction network. Rual JF, et al. Nature, 2005 Oct 20. PMID 16189514. The status, quality, and expansion of the NIH full-length cDNA project: the Mammalian Gene Collection (MGC). Gerhard DS, et al. Genome Res, 2004 Oct. PMID 15489334. Generation and initial analysis of more than 15,000 full-length human and mouse cDNA sequences. Strausberg RL, et al. Proc Natl Acad Sci U S A, 2002 Dec 24. PMID 12477932. The DNA sequence and comparative analysis of human chromosome 20. Deloukas P, et al. Nature, 2001 Dec 20-27. PMID 11780052. Prediction of the coding sequences of unidentified human genes. XVII. The complete sequences of 100 new cDNA clones from brain which code for large proteins in vitro. Nagase T, et al. DNA Res, 2000 Apr 28. PMID 10819331.

Images



Detection limit for recombinant GST tagged COL20A1 is approximately 0.03ng/ml as a capture antibody.

Please note: All products are 'FOR RESEARCH USE ONLY. NOT FOR USE IN DIAGNOSTIC OR THERAPEUTIC PROCEDURES'.