

KIAA1967 Antibody (monoclonal) (M04)

Mouse monoclonal antibody raised against a full length recombinant KIAA1967.

Catalog # AT2615a

Product Information

Application	WB, IF
Primary Accession	Q8N163
Other Accession	BC018269
Reactivity	Human
Host	mouse
Clonality	monoclonal
Isotype	IgG1 Kappa
Clone Names	4E7
Calculated MW	102902

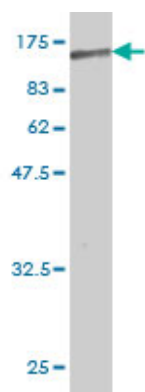
Additional Information

Gene ID	57805
Other Names	Cell cycle and apoptosis regulator protein 2, Cell division cycle and apoptosis regulator protein 2, DBIRD complex subunit KIAA1967, Deleted in breast cancer gene 1 protein, DBC-1, DBC1, p30 DBC, CCAR2, DBC1, KIAA1967
Target/Specificity	KIAA1967 (AAH18269, 5 a.a. ~ 365 a.a) full-length recombinant protein with GST tag. MW of the GST tag alone is 26 KDa.
Dilution	WB~~1:500~1000 IF~~1:50~200
Format	Clear, colorless solution in phosphate buffered saline, pH 7.2 .
Storage	Store at -20°C or lower. Aliquot to avoid repeated freezing and thawing.
Precautions	KIAA1967 Antibody (monoclonal) (M04) is for research use only and not for use in diagnostic or therapeutic procedures.

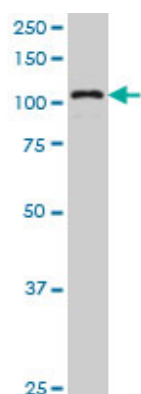
References

Identification of DBC1 as a transcriptional repressor for BRCA1. Hiraike H, et al. Br J Cancer, 2010 Mar 16. PMID 20160719.Deleted in breast cancer-1 regulates SIRT1 activity and contributes to high-fat diet-induced liver steatosis in mice. Escande C, et al. J Clin Invest, 2010 Feb 1. PMID 20071779.p30 DBC is a potential regulator of tumorigenesis. Kim JE, et al. Cell Cycle, 2009 Sep 15. PMID 19657230.Expression of DBC1 and SIRT1 is associated with poor prognosis of gastric carcinoma. Cha EJ, et al. Clin Cancer Res, 2009 Jul 1. PMID 19509139.Inhibition of SUV39H1 methyltransferase activity by DBC1. Li Z, et al. J Biol Chem, 2009 Apr 17. PMID 19218236.

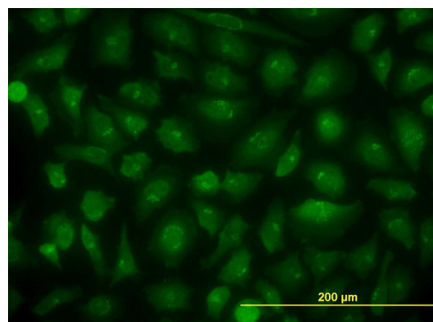
Images



Antibody Reactive Against Recombinant Protein. Western Blot detection against Immunogen (65.45 KDa) .



KIAA1967 monoclonal antibody (M04), clone 4E6 Western Blot analysis of KIAA1967 expression in A-549 (Cat # AT2615a)



Immunofluorescence of monoclonal antibody to KIAA1967 on HeLa cell. [antibody concentration 10 ug/ml]

Please note: All products are 'FOR RESEARCH USE ONLY. NOT FOR USE IN DIAGNOSTIC OR THERAPEUTIC PROCEDURES'.