

KIF15 Antibody (monoclonal) (M01)

Mouse monoclonal antibody raised against a partial recombinant KIF15.

Catalog # AT2618a

Product Information

Application	WB, E
Primary Accession	Q9NS87
Other Accession	NM_020242
Reactivity	Human
Host	mouse
Clonality	monoclonal
Isotype	IgG2b Kappa
Clone Names	4D4
Calculated MW	160160

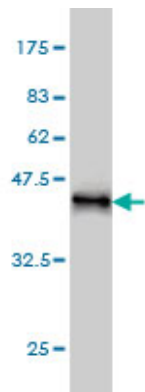
Additional Information

Gene ID	56992
Other Names	Kinesin-like protein KIF15, Kinesin-like protein 2, hKLP2, Kinesin-like protein 7, Serologically defined breast cancer antigen NY-BR-62, KIF15, KLP2, KNSL7
Target/Specificity	KIF15 (NP_064627, 1279 a.a. ~ 1385 a.a) partial recombinant protein with GST tag. MW of the GST tag alone is 26 KDa.
Dilution	WB~~1:500~1000 E~~N/A
Format	Clear, colorless solution in phosphate buffered saline, pH 7.2 .
Storage	Store at -20°C or lower. Aliquot to avoid repeated freezing and thawing.
Precautions	KIF15 Antibody (monoclonal) (M01) is for research use only and not for use in diagnostic or therapeutic procedures.

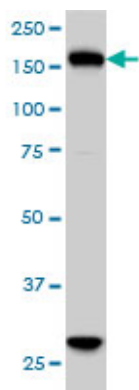
References

The role of Hklp2 in the stabilization and maintenance of spindle bipolarity. Vanneste D, et al. Curr Biol, 2009 Nov 3. PMID 19818619. Kif15 cooperates with eg5 to promote bipolar spindle assembly. Tanenbaum ME, et al. Curr Biol, 2009 Nov 3. PMID 19818618. A human protein-protein interaction network: a resource for annotating the proteome. Stelzl U, et al. Cell, 2005 Sep 23. PMID 16169070. Complete sequencing and characterization of 21,243 full-length human cDNAs. Ota T, et al. Nat Genet, 2004 Jan. PMID 14702039. Humoral immunity to human breast cancer: antigen definition and quantitative analysis of mRNA expression. Scanlan MJ, et al. Cancer Immun, 2001 Mar 30. PMID 12747765.

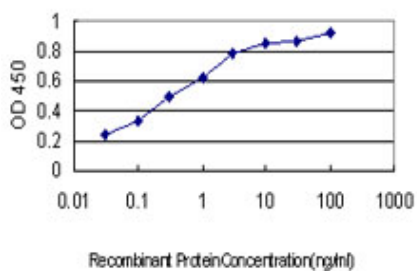
Images



Antibody Reactive Against Recombinant Protein. Western Blot detection against Immunogen (37.51 KDa) .



KIF15 monoclonal antibody (M01), clone 4D4 Western Blot analysis of KIF15 expression in HeLa (Cat # AT2618a)



Detection limit for recombinant GST tagged KIF15 is approximately 0.03ng/ml as a capture antibody.

Please note: All products are 'FOR RESEARCH USE ONLY. NOT FOR USE IN DIAGNOSTIC OR THERAPEUTIC PROCEDURES'.