

KIF2 Antibody (monoclonal) (M01)

Mouse monoclonal antibody raised against a full length recombinant KIF2.
Catalog # AT2619a

Product Information

Application	WB, IHC, E
Primary Accession	O00139
Other Accession	BC031828
Reactivity	Human
Host	mouse
Clonality	monoclonal
Isotype	IgG1 kappa
Clone Names	2D4

Additional Information

Other Names	Kinesin-like protein KIF2A, Kinesin-2, hK2, KIF2A, KIF2, KNS2
Target/Specificity	KIF2 (AAH31828.1, 1 a.a. ~ 679 a.a) full-length recombinant protein with GST tag. MW of the GST tag alone is 26 KDa.
Dilution	WB~~1:500~1000 IHC~~1:100~500 E~~N/A
Format	Clear, colorless solution in phosphate buffered saline, pH 7.2 .
Storage	Store at -20°C or lower. Aliquot to avoid repeated freezing and thawing.
Precautions	KIF2 Antibody (monoclonal) (M01) is for research use only and not for use in diagnostic or therapeutic procedures.

Background

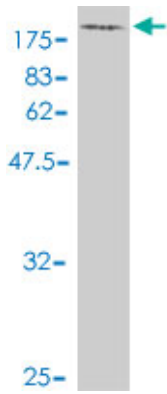
Kinesins, such as KIF2, are microtubule-associated motor proteins. For background information on kinesins, see MIM 148760.

References

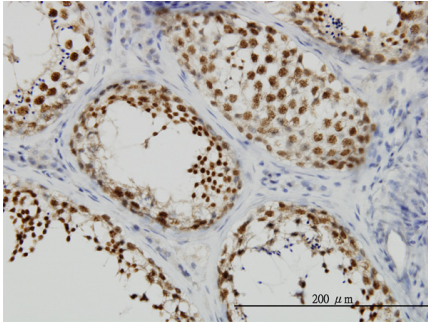
1. Lysosomal positioning coordinates cellular nutrient responses. Korolchuk VI, Saiki S, Lichtenberg M, Siddiqi FH, Roberts EA, Imarisio S, Jahreiss L, Sarkar S, Futter M, Menzies FM, O'Kane CJ, Deretic V, Rubinsztein DC. Nat Cell Biol. 2011 Apr;13(4):453-60. Epub 2011 Mar 13.

Images

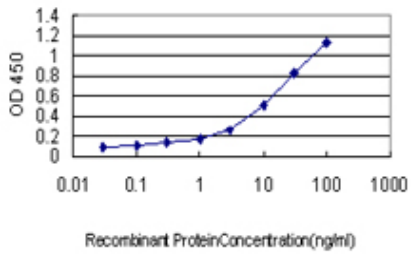
Antibody Reactive Against Recombinant Protein. Western



Blot detection against Immunogen (100.43 KDa) .



Immunoperoxidase of monoclonal antibody to KIF2 on formalin-fixed paraffin-embedded human testis. [antibody concentration 6 ug/ml]



Detection limit for recombinant GST tagged KIF2 is approximately 0.1 ng/ml as a capture antibody.

Please note: All products are 'FOR RESEARCH USE ONLY. NOT FOR USE IN DIAGNOSTIC OR THERAPEUTIC PROCEDURES'.