

# KIF2C Antibody (monoclonal) (M01)

Mouse monoclonal antibody raised against a partial recombinant KIF2C.

Catalog # AT2621a

## Product Information

---

<b>Application</b>	WB, IHC, IF, IP, E
<b>Primary Accession</b>	<a href="#">Q99661</a>
<b>Other Accession</b>	<a href="#">BC014924</a>
<b>Reactivity</b>	Human
<b>Host</b>	Mouse
<b>Clonality</b>	monoclonal
<b>Isotype</b>	IgG1 kappa
<b>Clone Names</b>	1G2
<b>Calculated MW</b>	81313

## Additional Information

---

<b>Gene ID</b>	11004
<b>Other Names</b>	Kinesin-like protein KIF2C, Kinesin-like protein 6, Mitotic centromere-associated kinesin, MCAK, KIF2C, KNSL6
<b>Target/Specificity</b>	KIF2C (AAH14924, 1 a.a. ~ 100 a.a) partial recombinant protein with GST tag. MW of the GST tag alone is 26 KDa.
<b>Dilution</b>	WB~~1:500~1000 IHC~~1:100~500 IF~~1:50~200 IP~~N/A E~~N/A
<b>Format</b>	Clear, colorless solution in phosphate buffered saline, pH 7.2 .
<b>Storage</b>	Store at -20°C or lower. Aliquot to avoid repeated freezing and thawing.
<b>Precautions</b>	KIF2C Antibody (monoclonal) (M01) is for research use only and not for use in diagnostic or therapeutic procedures.

## Background

---

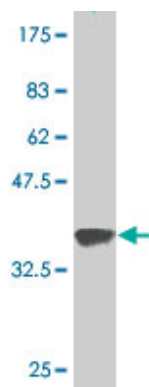
The protein encoded by this gene is a member of kinesin-like protein family. Proteins of this family are microtubule-dependent molecular motors that transport organelles within cells and move chromosomes during cell division. This protein is important for anaphase chromosome segregation and may be required to coordinate the onset of sister centromere separation.

## References

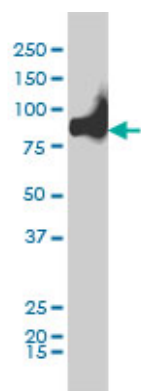
---

1.Mitotic Rounding Alters Cell Geometry to Ensure Efficient Bipolar Spindle Formation.Lancaster OM, Le Berre M, Dimitracopoulos A, Bonazzi D, Zlotek-Zlotkiewicz E, Picone R, Duke T, Piel M, Baum BDev Cell. 2013

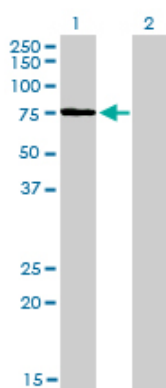
## Images



Antibody Reactive Against Recombinant Protein.Western Blot detection against Immunogen (36.63 KDa) .

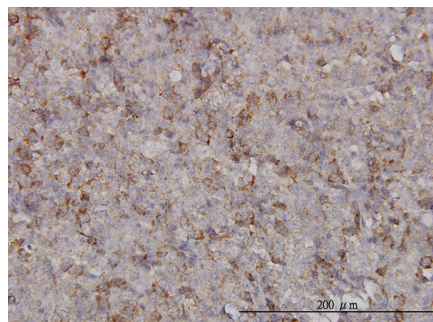


KIF2C monoclonal antibody (M01), clone 1G2 Western Blot analysis of KIF2C expression in HeLa S3 NE ( (Cat # AT2621a )



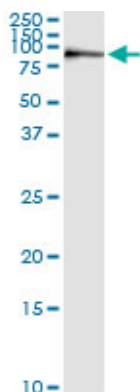
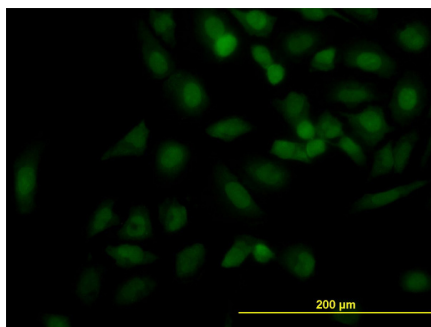
Western Blot analysis of KIF2C expression in transfected 293T cell line by KIF2C monoclonal antibody (M01), clone 1G2.

Lane 1: KIF2C transfected lysate(81.3 KDa).  
Lane 2: Non-transfected lysate.

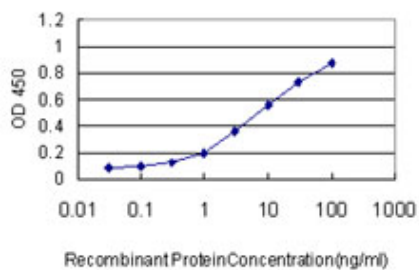


Immunoperoxidase of monoclonal antibody to KIF2C on formalin-fixed paraffin-embedded human malignant lymphoma, diffuse large B. [antibody concentration 3 ug/ml]

Immunofluorescence of monoclonal antibody to KIF2C on HeLa cell. [antibody concentration 10 ug/ml]



Immunoprecipitation of KIF2C transfected lysate using anti-KIF2C monoclonal antibody and Protein A Magnetic Bead ([U0007](#)), and immunoblotted with KIF2C MaxPab rabbit polyclonal antibody.



Detection limit for recombinant GST tagged KIF2C is approximately 0.1 ng/ml as a capture antibody.

Please note: All products are 'FOR RESEARCH USE ONLY. NOT FOR USE IN DIAGNOSTIC OR THERAPEUTIC PROCEDURES'.