

# KIFC1 Antibody (monoclonal) (M01)

Mouse monoclonal antibody raised against a partial recombinant KIFC1.

Catalog # AT2622a

## Product Information

---

<b>Application</b>	WB, IHC, IF, E
<b>Primary Accession</b>	<a href="#">Q9BW19</a>
<b>Other Accession</b>	<a href="#">BC000712</a>
<b>Reactivity</b>	Human
<b>Host</b>	mouse
<b>Clonality</b>	monoclonal
<b>Isotype</b>	IgG2a Kappa
<b>Clone Names</b>	2B9
<b>Calculated MW</b>	73748

## Additional Information

---

<b>Gene ID</b>	3833
<b>Other Names</b>	Kinesin-like protein KIFC1, Kinesin-like protein 2, Kinesin-related protein HSET, KIFC1, HSET, KNSL2
<b>Target/Specificity</b>	KIFC1 (AAH00712, 53 a.a. ~ 152 a.a) partial recombinant protein with GST tag. MW of the GST tag alone is 26 KDa.
<b>Dilution</b>	WB~~1:500~1000 IHC~~1:100~500 IF~~1:50~200 E~~N/A
<b>Format</b>	Clear, colorless solution in phosphate buffered saline, pH 7.2 .
<b>Storage</b>	Store at -20°C or lower. Aliquot to avoid repeated freezing and thawing.
<b>Precautions</b>	KIFC1 Antibody (monoclonal) (M01) is for research use only and not for use in diagnostic or therapeutic procedures.

## References

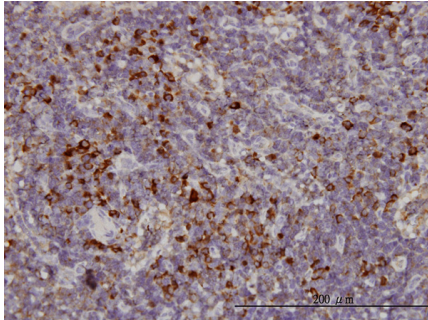
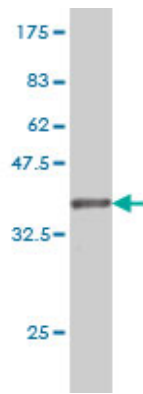
---

1.The Presence of Kinesin Superfamily Motor Proteins KIFC1 and KIF17 in Normal and Pathological Human Placenta.Sati L, Seval-Celik Y, Unek G, Korgun ET, Demir R.Placenta. 2009 Oct;30(10):848-54. Epub 2009 Aug 12.

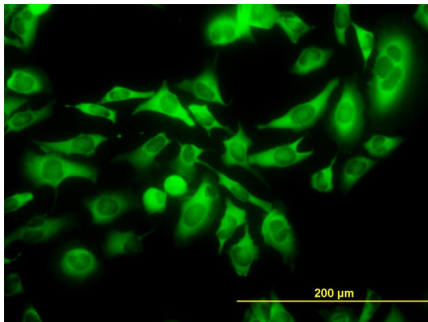
## Images

---

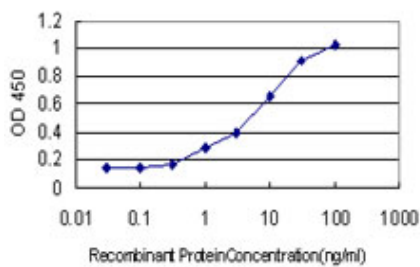
Antibody Reactive Against Recombinant Protein.Western Blot detection against Immunogen (36.41 KDa) .



Immunoperoxidase of monoclonal antibody to KIFC1 on formalin-fixed paraffin-embedded human lymph node. [antibody concentration 3 ug/ml]



Immunofluorescence of monoclonal antibody to KIFC1 on HeLa cell. [antibody concentration 10 ug/ml]



Detection limit for recombinant GST tagged KIFC1 is approximately 1ng/ml as a capture antibody.

Please note: All products are 'FOR RESEARCH USE ONLY. NOT FOR USE IN DIAGNOSTIC OR THERAPEUTIC PROCEDURES'.