

# KIRREL2 Antibody (monoclonal) (M01)

Mouse monoclonal antibody raised against a full length recombinant KIRREL2.

Catalog # AT2623a

## Product Information

---

<b>Application</b>	WB, IP, E
<b>Primary Accession</b>	<a href="#">Q6UWL6</a>
<b>Other Accession</b>	<a href="#">BC007312</a>
<b>Reactivity</b>	Human
<b>Host</b>	mouse
<b>Clonality</b>	monoclonal
<b>Isotype</b>	IgG2a kappa
<b>Clone Names</b>	2B9-1D3
<b>Calculated MW</b>	75093

## Additional Information

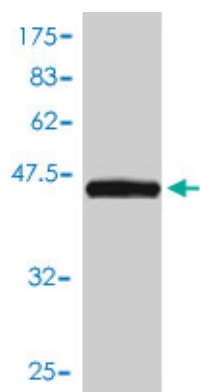
---

<b>Gene ID</b>	84063
<b>Other Names</b>	Kin of IRRE-like protein 2, Kin of irregular chiasm-like protein 2, Nephrin-like protein 3, KIRREL2, NEPH3
<b>Target/Specificity</b>	KIRREL2 (AAH07312, 1 a.a. ~ 219 a.a) full-length recombinant protein with GST tag. MW of the GST tag alone is 26 KDa.
<b>Dilution</b>	WB~~1:500~1000 IP~~N/A E~~N/A
<b>Format</b>	Clear, colorless solution in phosphate buffered saline, pH 7.2 .
<b>Storage</b>	Store at -20°C or lower. Aliquot to avoid repeated freezing and thawing.
<b>Precautions</b>	KIRREL2 Antibody (monoclonal) (M01) is for research use only and not for use in diagnostic or therapeutic procedures.

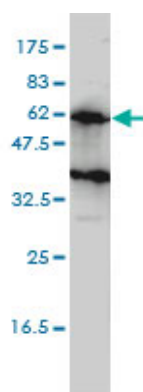
## References

---

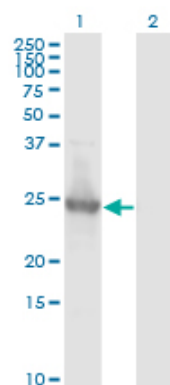
Variation at the NFATC2 Locus Increases the Risk of Thiazolinedinedione-Induced Edema in the Diabetes REduction Assessment with ramipril and rosiglitazone Medication (DREAM) Study. Bailey SD, et al. Diabetes Care, 2010 Jul 13. PMID 20628086. New genetic associations detected in a host response study to hepatitis B vaccine. Davila S, et al. Genes Immun, 2010 Apr. PMID 20237496. Gene-centric association signals for lipids and apolipoproteins identified via the HumanCVD BeadChip. Talmud PJ, et al. Am J Hum Genet, 2009 Nov. PMID 19913121. Regulation of Neph3 gene in podocytes--key roles of transcription factors NF-kappaB and Sp1. Ristola M, et al. BMC Mol Biol, 2009 Aug 24. PMID 19703278. Densin and filtrin in the pancreas and in the kidney, targets for humoral autoimmunity in patients with type 1 diabetes. Rinta-Valkama J, et al. Diabetes Metab Res Rev, 2007 Feb. PMID 16741999.



Antibody Reactive Against Recombinant Protein. Western Blot detection against Immunogen (49.83 KDa) .



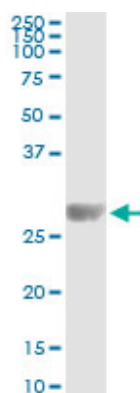
KIRREL2 monoclonal antibody (M01), clone 2B9-1D3  
Western Blot analysis of KIRREL2 expression in HeLa S3  
NE (Cat # AT2623a)



Western Blot analysis of KIRREL2 expression in  
transfected 293T cell line by KIRREL2 monoclonal  
antibody (M01), clone 2B9-1D3.

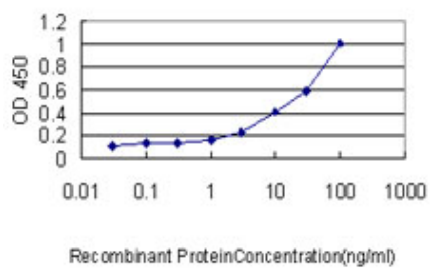
Lane 1: KIRREL2 transfected lysate (Predicted MW: 23.6  
kDa).

Lane 2: Non-transfected lysate.



Immunoprecipitation of KIRREL2 transfected lysate using  
anti-KIRREL2 monoclonal antibody and Protein A  
Magnetic Bead ([U0007](#)), and immunoblotted with  
KIRREL2 MaxPab rabbit polyclonal antibody.

Detection limit for recombinant GST tagged KIRREL2 is  
approximately 0.3ng/ml as a capture antibody.



Please note: All products are 'FOR RESEARCH USE ONLY. NOT FOR USE IN DIAGNOSTIC OR THERAPEUTIC PROCEDURES'.