

# KLF10 Antibody (monoclonal) (M02)

Mouse monoclonal antibody raised against a partial recombinant KLF10.

Catalog # AT2627a

## Product Information

---

<b>Application</b>	WB, IF
<b>Primary Accession</b>	<a href="#">Q13118</a>
<b>Other Accession</b>	<a href="#">BC011538</a>
<b>Reactivity</b>	Human
<b>Host</b>	mouse
<b>Clonality</b>	monoclonal
<b>Isotype</b>	IgG2b Kappa
<b>Clone Names</b>	4G9
<b>Calculated MW</b>	52555

## Additional Information

---

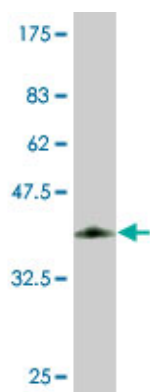
<b>Gene ID</b>	7071
<b>Other Names</b>	Krueppel-like factor 10, EGR-alpha, Transforming growth factor-beta-inducible early growth response protein 1, TGFB-inducible early growth response protein 1, TIEG-1, KLF10, TIEG, TIEG1
<b>Target/Specificity</b>	KLF10 (AAH11538.1, 1 a.a. ~ 110 a.a) partial recombinant protein with GST tag. MW of the GST tag alone is 26 KDa.
<b>Dilution</b>	WB~~1:500~1000 IF~~1:50~200
<b>Format</b>	Clear, colorless solution in phosphate buffered saline, pH 7.2 .
<b>Storage</b>	Store at -20°C or lower. Aliquot to avoid repeated freezing and thawing.
<b>Precautions</b>	KLF10 Antibody (monoclonal) (M02) is for research use only and not for use in diagnostic or therapeutic procedures.

## References

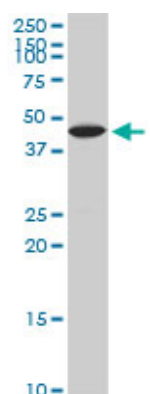
---

Evaluation of candidate stromal epithelial cross-talk genes identifies association between risk of serous ovarian cancer and TERT, a cancer susceptibility hot-spot. Johnatty SE, et al. PLoS Genet, 2010 Jul 8. PMID 20628624. Human variation in alcohol response is influenced by variation in neuronal signaling genes. Joslyn G, et al. Alcohol Clin Exp Res, 2010 May. PMID 20201926. Functional role of KLF10 in multiple disease processes. Subramaniam M, et al. Biofactors, 2010 Jan. PMID 20087894. High-density association study of 383 candidate genes for volumetric BMD at the femoral neck and lumbar spine among older men. Yerges LM, et al. J Bone Miner Res, 2009 Dec. PMID 19453261. Coeliac disease-associated risk variants in TNFAIP3 and REL implicate altered NF-kappaB signalling. Trynka G, et al. Gut, 2009 Aug. PMID 19240061.

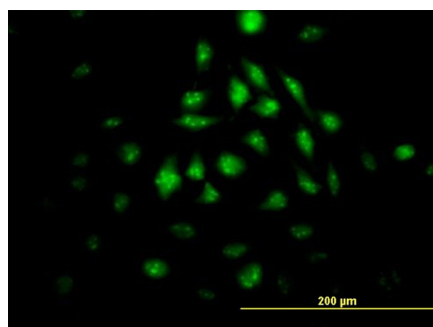
## Images



Antibody Reactive Against Recombinant Protein. Western Blot detection against Immunogen (37.73 KDa) .



KLF10 monoclonal antibody (M02), clone 4G9. Western Blot analysis of KLF10 expression in K-562((Cat # AT2627a )



Immunofluorescence of monoclonal antibody to KLF10 on HeLa cell. [antibody concentration 10 ug/ml]

Please note: All products are 'FOR RESEARCH USE ONLY. NOT FOR USE IN DIAGNOSTIC OR THERAPEUTIC PROCEDURES'.