

# KLF11 Antibody (monoclonal) (M01)

Mouse monoclonal antibody raised against a partial recombinant KLF11.

Catalog # AT2628a

## Product Information

---

<b>Application</b>	WB, IHC, IF, E
<b>Primary Accession</b>	<a href="#">O14901</a>
<b>Other Accession</b>	<a href="#">NM_003597</a>
<b>Reactivity</b>	Human
<b>Host</b>	mouse
<b>Clonality</b>	monoclonal
<b>Isotype</b>	IgG2a Kappa
<b>Clone Names</b>	8F4
<b>Calculated MW</b>	55139

## Additional Information

---

<b>Gene ID</b>	8462
<b>Other Names</b>	Krueppel-like factor 11, Transforming growth factor-beta-inducible early growth response protein 2, TGFB-inducible early growth response protein 2, TIEG-2, KLF11, FKLF, TIEG2
<b>Target/Specificity</b>	KLF11 (NP_003588, 404 a.a. ~ 512 a.a) partial recombinant protein with GST tag. MW of the GST tag alone is 26 KDa.
<b>Dilution</b>	WB~~1:500~1000 IHC~~1:100~500 IF~~1:50~200 E~~N/A
<b>Format</b>	Clear, colorless solution in phosphate buffered saline, pH 7.2 .
<b>Storage</b>	Store at -20°C or lower. Aliquot to avoid repeated freezing and thawing.
<b>Precautions</b>	KLF11 Antibody (monoclonal) (M01) is for research use only and not for use in diagnostic or therapeutic procedures.

## Background

---

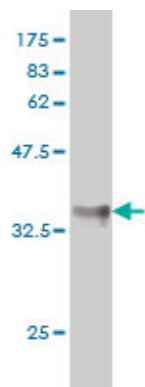
The protein encoded by this gene is a zinc finger transcription factor that binds to SP1-like sequences in epsilon- and gamma-globin gene promoters. This binding inhibits cell growth and causes apoptosis. Defects in this gene are a cause of maturity-onset diabetes of the young type 7 (MODY7). Three transcript variants encoding two different isoforms have been found for this gene.

## References

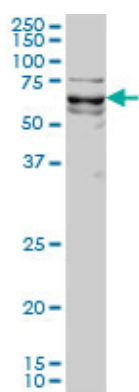
---

1.A Novel Role of the Sp/KLF Transcription Factor KLF11 in Arresting Progression of Endometriosis.Daftary

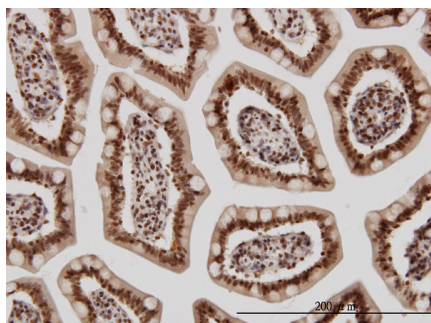
## Images



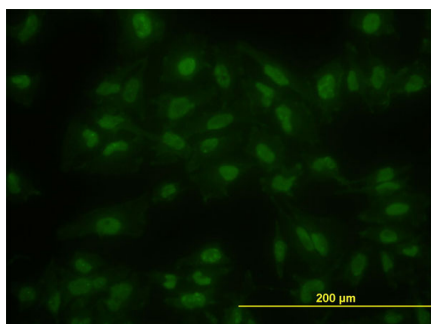
Antibody Reactive Against Recombinant Protein. Western Blot detection against Immunogen (37.73 KDa) .



KLF11 monoclonal antibody (M01), clone 8F4 Western Blot analysis of KLF11 expression in HeLa S3 NE ( (Cat # AT2628a )

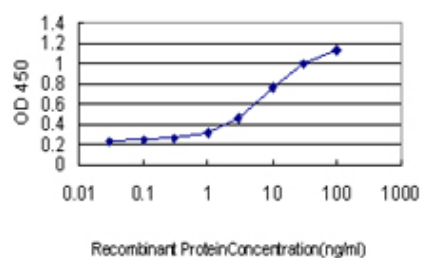


Immunoperoxidase of monoclonal antibody to KLF11 on formalin-fixed paraffin-embedded human small Intestine. [antibody concentration 3 ug/ml]



Immunofluorescence of monoclonal antibody to KLF11 on HeLa cell. [antibody concentration 10 ug/ml]

Detection limit for recombinant GST tagged KLF11 is approximately 0.1ng/ml as a capture antibody.



Please note: All products are 'FOR RESEARCH USE ONLY. NOT FOR USE IN DIAGNOSTIC OR THERAPEUTIC PROCEDURES'.