

## KLF7 Antibody (monoclonal) (M01)

Mouse monoclonal antibody raised against a full length recombinant KLF7.

Catalog # AT2634a

### Product Information

---

|                          |                          |
|--------------------------|--------------------------|
| <b>Application</b>       | WB, E                    |
| <b>Primary Accession</b> | <a href="#">O75840</a>   |
| <b>Other Accession</b>   | <a href="#">BC012919</a> |
| <b>Reactivity</b>        | Human, Rat               |
| <b>Host</b>              | mouse                    |
| <b>Clonality</b>         | monoclonal               |
| <b>Isotype</b>           | IgG2b Kappa              |
| <b>Clone Names</b>       | 3E8-B8                   |
| <b>Calculated MW</b>     | 33362                    |

### Additional Information

---

|                           |  |
|---------------------------|--|
| <b>Gene ID</b>            | 8609   |
| <b>Other Names</b>        | Krueppel-like factor 7, Ubiquitous krueppel-like factor, KLF7, UKLF  |
| <b>Target/Specificity</b> | KLF7 (AAH12919, 1 a.a. ~ 230 a.a) full-length recombinant protein with GST tag. MW of the GST tag alone is 26 KDa. |
| <b>Dilution</b>           | WB~~1:500~1000 E~~N/A  |
| <b>Format</b>             | Clear, colorless solution in phosphate buffered saline, pH 7.2 .   |
| <b>Storage</b>            | Store at -20°C or lower. Aliquot to avoid repeated freezing and thawing.   |
| <b>Precautions</b>        | KLF7 Antibody (monoclonal) (M01) is for research use only and not for use in diagnostic or therapeutic procedures. |

### References

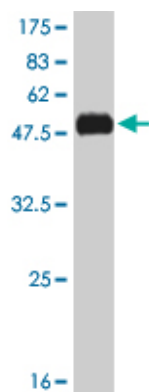
---

1.Transcription factor KLF7 regulates differentiation of neuroectodermal and mesodermal cell lineages.Caiazzo M, Colucci-D'Amato L, Esposito MT, Parisi S, Stifani S, Ramirez F, di Porzio U.Exp. Cell. Res. (2010), doi:10.1016/ j.yexcr.2010.05.021

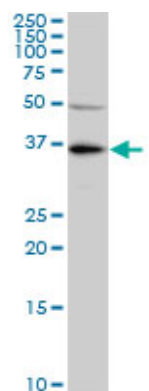
### Images

---

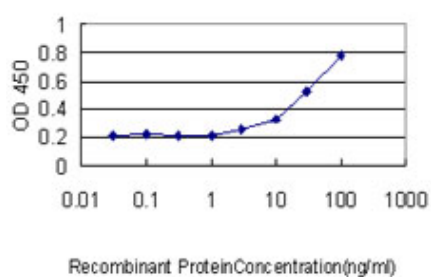
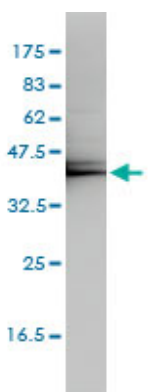
Antibody Reactive Against Recombinant Protein.Western Blot detection against Immunogen (51.04 KDa) .



KLF7 monoclonal antibody (M01), clone 3E8-B8. Western Blot analysis of KLF7 expression in PC-12 ( (Cat # AT2634a )



KLF7 monoclonal antibody (M01), clone 3E8-B8 Western Blot analysis of KLF7 expression in K-562 ( (Cat # AT2634a )



Detection limit for recombinant GST tagged KLF7 is approximately 0.03ng/ml as a capture antibody.

Please note: All products are 'FOR RESEARCH USE ONLY. NOT FOR USE IN DIAGNOSTIC OR THERAPEUTIC PROCEDURES'.