

KLHDC4 Antibody (monoclonal) (M02)

Mouse monoclonal antibody raised against a full length recombinant KLHDC4.

Catalog # AT2638a

Product Information

Application	WB, IHC, IF, E
Primary Accession	Q8TBB5
Other Accession	BC001044
Reactivity	Human
Host	mouse
Clonality	monoclonal
Isotype	IgG2a Kappa
Clone Names	4G11
Calculated MW	57892

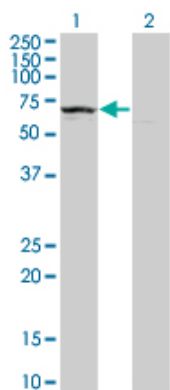
Additional Information

Gene ID	54758
Other Names	Kelch domain-containing protein 4, KLHDC4
Target/Specificity	KLHDC4 (AAH01044, 1 a.a. ~ 463 a.a) full-length recombinant protein with GST tag. MW of the GST tag alone is 26 KDa.
Dilution	WB~~1:500~1000 IHC~~1:100~500 IF~~1:50~200 E~~N/A
Format	Clear, colorless solution in phosphate buffered saline, pH 7.2 .
Storage	Store at -20°C or lower. Aliquot to avoid repeated freezing and thawing.
Precautions	KLHDC4 Antibody (monoclonal) (M02) is for research use only and not for use in diagnostic or therapeutic procedures.

References

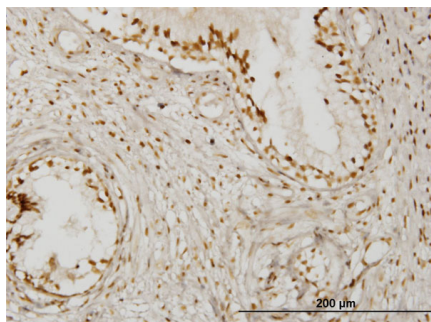
Global, in vivo, and site-specific phosphorylation dynamics in signaling networks. Olsen JV, et al. Cell, 2006 Nov 3. PMID 17081983. The status, quality, and expansion of the NIH full-length cDNA project: the Mammalian Gene Collection (MGC). Gerhard DS, et al. Genome Res, 2004 Oct. PMID 15489334. Sequence comparison of human and mouse genes reveals a homologous block structure in the promoter regions. Suzuki Y, et al. Genome Res, 2004 Sep. PMID 15342556. Large-scale characterization of HeLa cell nuclear phosphoproteins. Beausoleil SA, et al. Proc Natl Acad Sci U S A, 2004 Aug 17. PMID 15302935. Complete sequencing and characterization of 21,243 full-length human cDNAs. Ota T, et al. Nat Genet, 2004 Jan. PMID 14702039.

Images

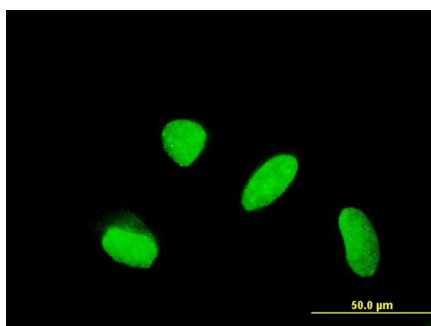


Western Blot analysis of KLHDC4 expression in transfected 293T cell line by KLHDC4 monoclonal antibody (M02), clone 4G11.

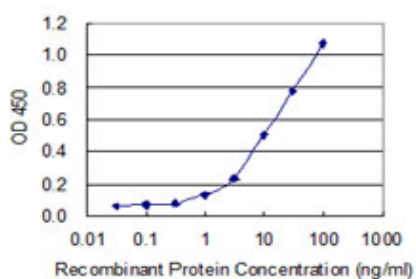
Lane 1: KLHDC4 transfected lysate(57.9 kDa).
Lane 2: Non-transfected lysate.



Immunoperoxidase of monoclonal antibody to KLHDC4 on formalin-fixed paraffin-embedded human prostate. [antibody concentration 1.5 ug/ml]



Immunofluorescence of monoclonal antibody to KLHDC4 on HeLa cell . [antibody concentration 10 ug/ml]



Detection limit for recombinant GST tagged KLHDC4 is 0.3 ng/ml as a capture antibody.

Please note: All products are 'FOR RESEARCH USE ONLY. NOT FOR USE IN DIAGNOSTIC OR THERAPEUTIC PROCEDURES'.