

# KNTC1 Antibody (monoclonal) (M01)

Mouse monoclonal antibody raised against a partial recombinant KNTC1.

Catalog # AT2645a

## Product Information

---

<b>Application</b>	WB, IF, E
<b>Primary Accession</b>	<a href="#">P50748</a>
<b>Other Accession</b>	<a href="#">NM_014708</a>
<b>Reactivity</b>	Human
<b>Host</b>	mouse
<b>Clonality</b>	monoclonal
<b>Isotype</b>	IgG2a Kappa
<b>Clone Names</b>	10H4
<b>Calculated MW</b>	250749

## Additional Information

---

<b>Gene ID</b>	9735
<b>Other Names</b>	Kinetochore-associated protein 1, Rough deal homolog, HsROD, Rod, hRod, KNTC1, KIAA0166
<b>Target/Specificity</b>	KNTC1 (NP_055523, 2100 a.a. ~ 2209 a.a) partial recombinant protein with GST tag. MW of the GST tag alone is 26 KDa.
<b>Dilution</b>	WB~~1:500~1000 IF~~1:50~200 E~~N/A
<b>Format</b>	Clear, colorless solution in phosphate buffered saline, pH 7.2 .
<b>Storage</b>	Store at -20°C or lower. Aliquot to avoid repeated freezing and thawing.
<b>Precautions</b>	KNTC1 Antibody (monoclonal) (M01) is for research use only and not for use in diagnostic or therapeutic procedures.

## Background

---

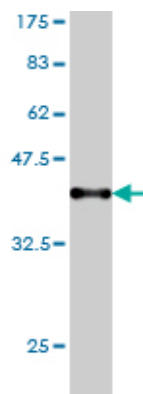
This gene encodes a protein that is one of many involved in mechanisms to ensure proper chromosome segregation during cell division. Experimental evidence indicated that the encoded protein functioned in a similar manner to that of the *Drosophila* rough deal protein.

## References

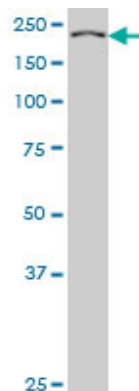
---

1.Modulations of cell cycle checkpoints during HCV associated disease.Sarfraz S, Hamid S, Ali S, Jafri W, Siddiqui AA.BMC Infect Dis. 2009 Aug 10;9:125.2.Mitotic control of kinetochore-associated dynein and spindle orientation by human Spindly.Chan YW, Fava LL, Uldschmid A, Schmitz MH, Gerlich DW, Nigg EA,

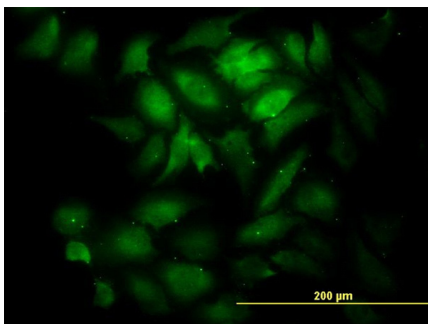
## Images



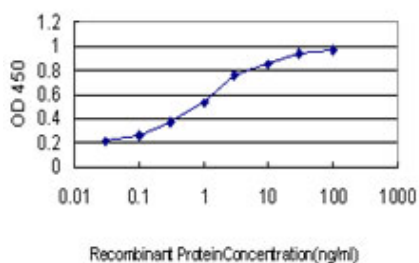
Antibody Reactive Against Recombinant Protein. Western Blot detection against Immunogen (37.84 KDa) .



KNTC1 monoclonal antibody (M01), clone 10H4 Western Blot analysis of KNTC1 expression in HeLa S3 NE ( (Cat # AT2645a )



Immunofluorescence of monoclonal antibody to KNTC1 on HeLa cell. [antibody concentration 50 ug/ml]



Detection limit for recombinant GST tagged KNTC1 is approximately 0.03ng/ml as a capture antibody.

Please note: All products are 'FOR RESEARCH USE ONLY. NOT FOR USE IN DIAGNOSTIC OR THERAPEUTIC PROCEDURES'.