

KNTC2 Antibody (monoclonal) (M01)

Mouse monoclonal antibody raised against a partial recombinant KNTC2.

Catalog # AT2646a

Product Information

Application	WB, E
Primary Accession	Q14777
Other Accession	BC035617
Reactivity	Human
Host	mouse
Clonality	monoclonal
Isotype	IgG1 Kappa
Clone Names	1A10
Calculated MW	73913

Additional Information

Gene ID	10403
Other Names	Kinetochore protein NDC80 homolog, Highly expressed in cancer protein, Kinetochore protein Hec1, HsHec1, Kinetochore-associated protein 2, Retinoblastoma-associated protein HEC, NDC80, HEC, HEC1, KNTC2
Target/Specificity	KNTC2 (AAH35617, 545 a.a. ~ 642 a.a) partial recombinant protein with GST tag. MW of the GST tag alone is 26 KDa.
Dilution	WB~~1:500~1000 E~~N/A
Format	Clear, colorless solution in phosphate buffered saline, pH 7.2 .
Storage	Store at -20°C or lower. Aliquot to avoid repeated freezing and thawing.
Precautions	KNTC2 Antibody (monoclonal) (M01) is for research use only and not for use in diagnostic or therapeutic procedures.

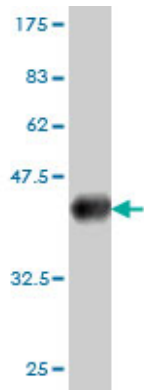
Background

HEC is one of several proteins involved in spindle checkpoint signaling. This surveillance mechanism assures correct segregation of chromosomes during cell division by detecting unaligned chromosomes and causing prometaphase arrest until the proper bipolar attachment of chromosomes is achieved.

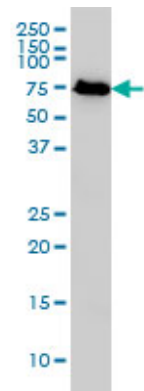
References

1.Proinvasion metastasis drivers in early-stage melanoma are oncogenes.Scott KL, Nogueira C, Heffernan TP, van Doorn R, Dhakal S, Hanna JA, Min C, Jaskelioff M, Xiao Y, Wu CJ, Cameron LA, Perry SR, Zeid R, Feinberg T,

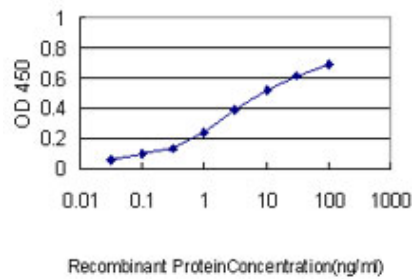
Images



Antibody Reactive Against Recombinant Protein.Western Blot detection against Immunogen (36.19 KDa) .



KNTC2 monoclonal antibody (M01), clone 1A10 Western Blot analysis of KNTC2 expression in HeLa S3 NE ((Cat # AT2646a)



Detection limit for recombinant GST tagged KNTC2 is approximately 0.1ng/ml as a capture antibody.

Please note: All products are 'FOR RESEARCH USE ONLY. NOT FOR USE IN DIAGNOSTIC OR THERAPEUTIC PROCEDURES'.