

KRT17 Antibody (monoclonal) (M01)

Mouse monoclonal antibody raised against a full length recombinant KRT17.

Catalog # AT2653a

Product Information

Application	WB, IHC, IF, IP
Primary Accession	Q04695
Other Accession	BC000159
Reactivity	Human
Host	mouse
Clonality	monoclonal
Isotype	IgG1 kappa
Clone Names	2D4-1G9
Calculated MW	48106

Additional Information

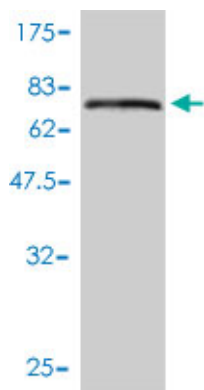
Gene ID	3872
Other Names	Keratin, type I cytoskeletal 17, Cytokeratin-17, CK-17, Keratin-17, K17, KRT17
Target/Specificity	KRT17 (AAH00159, 1 a.a. ~ 432 a.a) full-length recombinant protein with GST tag. MW of the GST tag alone is 26 KDa.
Dilution	WB~~1:500~1000 IHC~~1:100~500 IF~~1:50~200 IP~~N/A
Format	Clear, colorless solution in phosphate buffered saline, pH 7.2 .
Storage	Store at -20°C or lower. Aliquot to avoid repeated freezing and thawing.
Precautions	KRT17 Antibody (monoclonal) (M01) is for research use only and not for use in diagnostic or therapeutic procedures.

Background

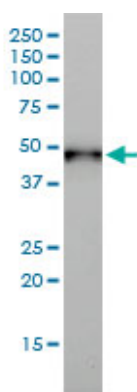
This gene encodes the type I intermediate filament chain keratin 17, expressed in nail bed, hair follicle, sebaceous glands, and other epidermal appendages. Mutations in this gene lead to Jackson-Lawler type pachyonychia congenita and steatocystoma multiplex.

References

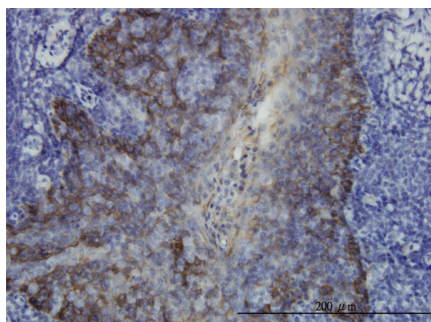
1. Novel markers for differentiation of lobular and ductal invasive breast carcinomas by laser microdissection and microarray analysis. Turashvili G, Bouchal J, Baumforth K, Wei W, Dziechciarkova M, Ehrmann J, Klein J, Fridman E, Skarda J, Srovnal J, Hajduch M, Murray P, Kolar Z. BMC Cancer. 2007 Mar 27;7:55.



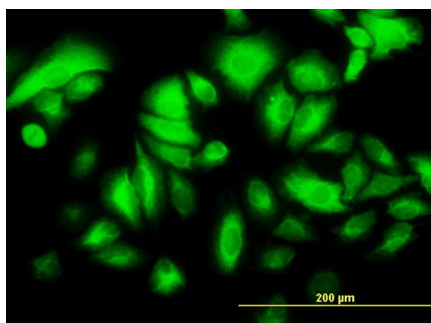
Antibody Reactive Against Recombinant Protein. Western Blot detection against Immunogen (73.26 KDa) .



KRT17 monoclonal antibody (M01), clone 2D4-1G9
Western Blot analysis of KRT17 expression in A-431 (Cat # AT2653a)



Immunoperoxidase of monoclonal antibody to KRT17 on formalin-fixed paraffin-embedded human tonsil. [antibody concentration 3 ug/ml]



Immunofluorescence of monoclonal antibody to KRT17 on HeLa cell. [antibody concentration 25 ug/ml]

Immunoprecipitation of KRT17 transfected lysate using anti-KRT17 monoclonal antibody and Protein A Magnetic Bead ([U0007](#)), and immunoblotted with KRT17 MaxPab rabbit polyclonal antibody.



Please note: All products are 'FOR RESEARCH USE ONLY. NOT FOR USE IN DIAGNOSTIC OR THERAPEUTIC PROCEDURES'.