

## KRT17 Antibody (monoclonal) (M02)

Mouse monoclonal antibody raised against a full length recombinant KRT17.

Catalog # AT2654a

### Product Information

---

<b>Application</b>	WB, IHC, E
<b>Primary Accession</b>	<a href="#">Q04695</a>
<b>Other Accession</b>	<a href="#">BC000159</a>
<b>Reactivity</b>	Human
<b>Host</b>	mouse
<b>Clonality</b>	monoclonal
<b>Isotype</b>	IgG1 Kappa
<b>Clone Names</b>	2D10
<b>Calculated MW</b>	48106

### Additional Information

---

<b>Gene ID</b>	3872
<b>Other Names</b>	Keratin, type I cytoskeletal 17, Cytokeratin-17, CK-17, Keratin-17, K17, KRT17
<b>Target/Specificity</b>	KRT17 (AAH00159, 1 a.a. ~ 432 a.a) full-length recombinant protein with GST tag. MW of the GST tag alone is 26 KDa.
<b>Dilution</b>	WB~~1:500~1000 IHC~~1:100~500 E~~N/A
<b>Format</b>	Clear, colorless solution in phosphate buffered saline, pH 7.2 .
<b>Storage</b>	Store at -20°C or lower. Aliquot to avoid repeated freezing and thawing.
<b>Precautions</b>	KRT17 Antibody (monoclonal) (M02) is for research use only and not for use in diagnostic or therapeutic procedures.

### Background

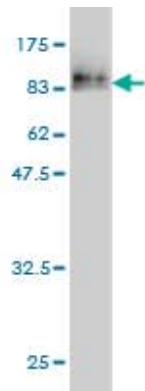
---

This gene encodes the type I intermediate filament chain keratin 17, expressed in nail bed, hair follicle, sebaceous glands, and other epidermal appendages. Mutations in this gene lead to Jackson-Lawler type pachyonychia congenita and steatocystoma multiplex.

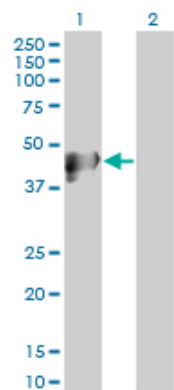
### References

---

1.Molecular classification of nonsmall-cell lung cancer using a 4-protein quantitative assay.Anagnostou VK, Dimou AT, Botsis T, Killiam EJ, Gustavson MD, Homer RJ, Boffa D, Zolota V, Dougenis D, Tanoue L, Gettinger SN, Detterbeck FC, Syrigos KN, Bepler G, Rimm DL.Cancer. 2012 Mar 15;118(6):1607-18. doi: 10.1002/cncr.26450. Epub 2011 Aug 25.

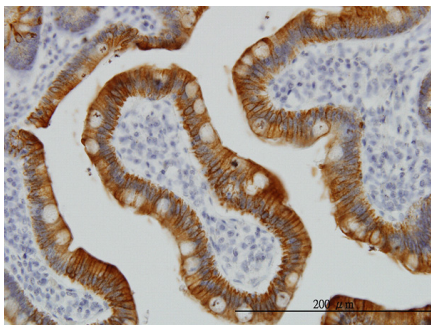


Antibody Reactive Against Recombinant Protein.Western Blot detection against Immunogen (73.26 KDa) .

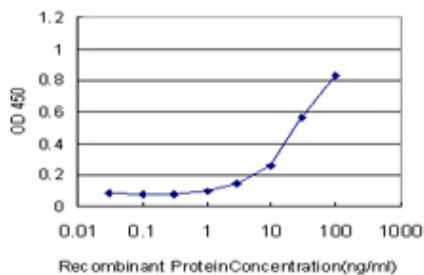


Western Blot analysis of KRT17 expression in transfected 293T cell line by KRT17 monoclonal antibody (M02), clone 2D10.

Lane 1: KRT17 transfected lysate(48.1 KDa).  
Lane 2: Non-transfected lysate.



Immunoperoxidase of monoclonal antibody to KRT17 on formalin-fixed paraffin-embedded human small Intestine. [antibody concentration 3 ug/ml]



Detection limit for recombinant GST tagged KRT17 is approximately 3ng/ml as a capture antibody.

Please note: All products are 'FOR RESEARCH USE ONLY. NOT FOR USE IN DIAGNOSTIC OR THERAPEUTIC PROCEDURES'.