

KRT20 Antibody (monoclonal) (M01)

Mouse monoclonal antibody raised against a full length recombinant KRT20.

Catalog # AT2657a

Product Information

Application	WB, IHC, IF, E
Primary Accession	P35900
Other Accession	BC031559
Reactivity	Human
Host	mouse
Clonality	monoclonal
Isotype	IgG1 kappa
Clone Names	2G3-1C8
Calculated MW	48487

Additional Information

Gene ID	54474
Other Names	Keratin, type I cytoskeletal 20, Cytokeratin-20, CK-20, Keratin-20, K20, Protein IT, KRT20
Target/Specificity	KRT20 (AAH31559, 1 a.a. ~ 424 a.a) full-length recombinant protein with GST tag. MW of the GST tag alone is 26 KDa.
Dilution	WB~~1:500~1000 IHC~~1:100~500 IF~~1:50~200 E~~N/A
Format	Clear, colorless solution in phosphate buffered saline, pH 7.2 .
Storage	Store at -20°C or lower. Aliquot to avoid repeated freezing and thawing.
Precautions	KRT20 Antibody (monoclonal) (M01) is for research use only and not for use in diagnostic or therapeutic procedures.

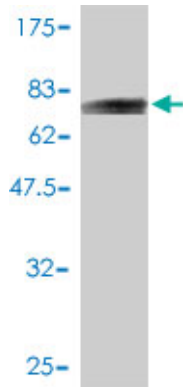
Background

The protein encoded by this gene is a member of the keratin family. The keratins are intermediate filament proteins responsible for the structural integrity of epithelial cells and are subdivided into cytokeratins and hair keratins. The type I cytokeratins consist of acidic proteins which are arranged in pairs of heterotypic keratin chains. This cytokeratin is a major cellular protein of mature enterocytes and goblet cells and is specifically expressed in the gastric and intestinal mucosa. The type I cytokeratin genes are clustered in a region of chromosome 17q12-q21.

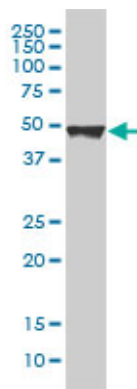
References

The clinical implications of MMP-11 and CK-20 expression in human breast cancer. Cheng CW, et al. Clin Chim Acta, 2010 Feb. PMID 19914229. Identification of 15 loci influencing height in a Korean population. Kim JJ, et al. J Hum Genet, 2010 Jan. PMID 19893584. Aberrant expression of class III beta-tubulin in basal cell carcinoma of the skin. Ishida M, et al. Oncol Rep, 2009 Oct. PMID 19724850. [Association of CK20 expression with the progression, metastasis and prognosis of breast cancer] Wang SM, et al. Xi Bao Yu Fen Zi Mian Yi Xue Za Zhi, 2009 Aug. PMID 19664394. Detection of epithelial cells by RT-PCR targeting CEA, CK20, and TEM-8 in colorectal carcinoma patients using OncoQuick density gradient centrifugation system. Lagoudianakis EE, et al. J Surg Res, 2009 Aug. PMID 19645077.

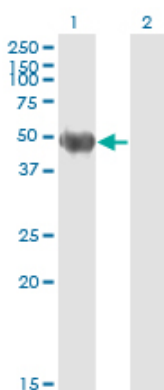
Images



Antibody Reactive Against Recombinant Protein. Western Blot detection against Immunogen (72.38 KDa) .

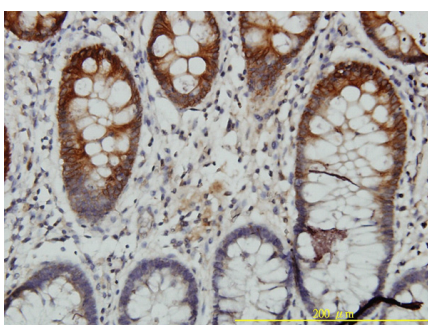


KRT20 monoclonal antibody (M01), clone 2G3-1C8
Western Blot analysis of KRT20 expression in A-431 ((Cat # AT2657a)

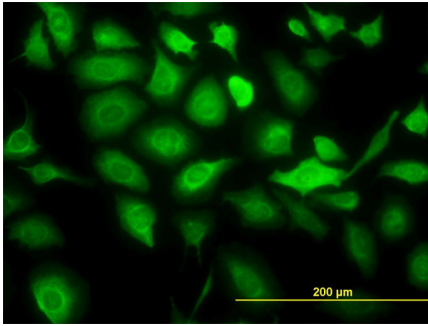


Western Blot analysis of KRT20 expression in transfected 293T cell line by KRT20 monoclonal antibody (M01), clone 2G3-1C8.

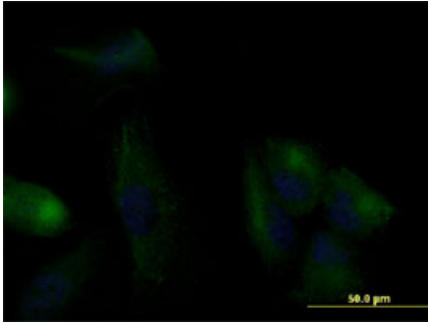
Lane 1: KRT20 transfected lysate(48.5 KDa).
Lane 2: Non-transfected lysate.



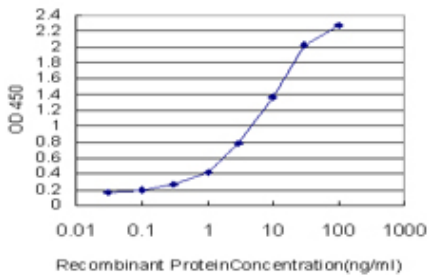
Immunoperoxidase of monoclonal antibody to KRT20 on formalin-fixed paraffin-embedded human colon tissue. [antibody concentration 3 ug/ml]



Immunofluorescence of monoclonal antibody to KRT20 on HeLa cell. [antibody concentration 10 ug/ml]



Immunofluorescence of monoclonal antibody to KRT20 on U-2 OS cell. [antibody concentration 10 ug/ml]



Detection limit for recombinant GST tagged KRT20 is approximately 0.03ng/ml as a capture antibody.

Please note: All products are 'FOR RESEARCH USE ONLY. NOT FOR USE IN DIAGNOSTIC OR THERAPEUTIC PROCEDURES'.