

## KYNU Antibody (monoclonal) (M02)

Mouse monoclonal antibody raised against a partial recombinant KYNU.

Catalog # AT2665a

### Product Information

---

Application	WB, E
Primary Accession	<a href="#">Q16719</a>
Other Accession	<a href="#">NM_003937</a>
Reactivity	Human
Host	mouse
Clonality	monoclonal
Isotype	IgG2a Lambda
Clone Names	1G2
Calculated MW	52352

### Additional Information

---

Gene ID	8942
Other Names	Kynureninase {ECO:0000255 HAMAP-Rule:MF_03017}, 3713 {ECO:0000255 HAMAP-Rule:MF_03017}, L-kynurenine hydrolase {ECO:0000255 HAMAP-Rule:MF_03017}, KYNU {ECO:0000255 HAMAP-Rule:MF_03017}
Target/Specificity	KYNU (NP_003928, 2 a.a. ~ 108 a.a) partial recombinant protein with GST tag. MW of the GST tag alone is 26 KDa.
Dilution	WB~~1:500~1000 E~~N/A
Format	Clear, colorless solution in phosphate buffered saline, pH 7.2 .
Storage	Store at -20°C or lower. Aliquot to avoid repeated freezing and thawing.
Precautions	KYNU Antibody (monoclonal) (M02) is for research use only and not for use in diagnostic or therapeutic procedures.

### Background

---

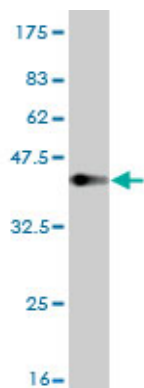
Kynureninase is a pyridoxal-5'-phosphate (pyridoxal-P) dependent enzyme that catalyzes the cleavage of L-kynurenine and L-3-hydroxykynurenine into anthranilic and 3-hydroxyanthranilic acids, respectively. Kynureninase is involved in the biosynthesis of NAD cofactors from tryptophan through the kynurenine pathway. Two transcript variants encoding different isoforms have been found for this gene.

### References

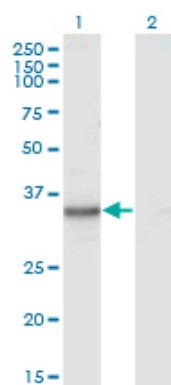
---

Personalized smoking cessation: interactions between nicotine dose, dependence and quit-success genotype score. Rose JE, et al. Mol Med, 2010 Jul-Aug. PMID 20379614. Xanthurenic aciduria due to a mutation in KYNU encoding kynureninase. Christensen M, et al. J Inherit Metab Dis, 2007 Apr. PMID 17334708. [A polymorphism of kynureninase gene in a hypertensive candidate chromosomal region is associated with essential hypertension] Zhang Y, et al. Zhonghua Xin Xue Guan Bing Za Zhi, 2005 Jul. PMID 16080802. Enzymology of NAD<sup>+</sup> homeostasis in man. Magni G, et al. Cell Mol Life Sci, 2004 Jan. PMID 14704851. Generation and initial analysis of more than 15,000 full-length human and mouse cDNA sequences. Strausberg RL, et al. Proc Natl Acad Sci U S A, 2002 Dec 24. PMID 12477932.

## Images



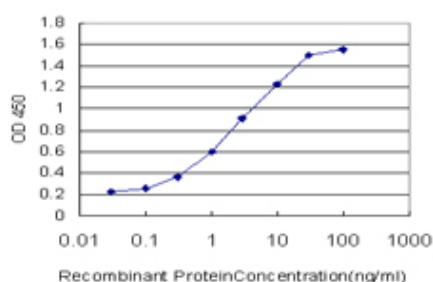
Antibody Reactive Against Recombinant Protein. Western Blot detection against Immunogen (37.51 KDa) .



Western Blot analysis of KYNU expression in transfected 293T cell line by KYNU monoclonal antibody (M02), clone 1G2.

Lane 1: KYNU transfected lysate (Predicted MW: 34.6 KDa).

Lane 2: Non-transfected lysate.



Detection limit for recombinant GST tagged KYNU is approximately 0.1 ng/ml as a capture antibody.

Please note: All products are 'FOR RESEARCH USE ONLY. NOT FOR USE IN DIAGNOSTIC OR THERAPEUTIC PROCEDURES'.