

## L3MBTL2 Antibody (monoclonal) (M01)

Mouse monoclonal antibody raised against a partial recombinant L3MBTL2.

Catalog # AT2666a

### Product Information

---

<b>Application</b>	WB, E
<b>Primary Accession</b>	<a href="#">Q969R5</a>
<b>Other Accession</b>	<a href="#">NM_031488</a>
<b>Reactivity</b>	Human
<b>Host</b>	mouse
<b>Clonality</b>	monoclonal
<b>Isotype</b>	IgG1 Kappa
<b>Clone Names</b>	4F4
<b>Calculated MW</b>	79110

### Additional Information

---

<b>Gene ID</b>	83746
<b>Other Names</b>	Lethal(3)malignant brain tumor-like protein 2, H-l(3)mbt-like protein 2, L(3)mbt-like protein 2, L3MBTL2
<b>Target/Specificity</b>	L3MBTL2 (NP_113676, 642 a.a. ~ 705 a.a) partial recombinant protein with GST tag. MW of the GST tag alone is 26 KDa.
<b>Dilution</b>	WB~~1:500~1000 E~~N/A
<b>Format</b>	Clear, colorless solution in phosphate buffered saline, pH 7.2 .
<b>Storage</b>	Store at -20°C or lower. Aliquot to avoid repeated freezing and thawing.
<b>Precautions</b>	L3MBTL2 Antibody (monoclonal) (M01) is for research use only and not for use in diagnostic or therapeutic procedures.

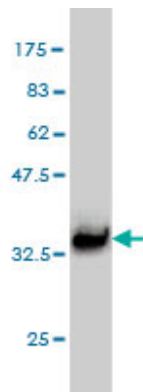
### References

---

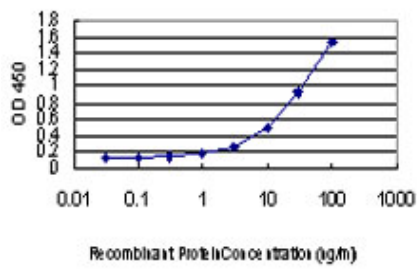
Solution structure of the FCS zinc finger domain of the human polycomb group protein L(3)mbt-like 2. Lechtenberg BC, et al. Protein Sci, 2009 Mar. PMID 19241375. Methylation-state-specific recognition of histones by the MBT repeat protein L3MBTL2. Guo Y, et al. Nucleic Acids Res, 2009 Apr. PMID 19233876. Toward a confocal subcellular atlas of the human proteome. Barbe L, et al. Mol Cell Proteomics, 2008 Mar. PMID 18029348. L3MBTL1, a histone-methylation-dependent chromatin lock. Trojer P, et al. Cell, 2007 Jun 1. PMID 17540172. The LIFEdb database in 2006. Mehrle A, et al. Nucleic Acids Res, 2006 Jan 1. PMID 16381901.

### Images

---



Antibody Reactive Against Recombinant Protein. Western Blot detection against Immunogen (32.78 KDa) .



Detection limit for recombinant GST tagged L3MBTL2 is approximately 1 ng/ml as a capture antibody.

Please note: All products are 'FOR RESEARCH USE ONLY. NOT FOR USE IN DIAGNOSTIC OR THERAPEUTIC PROCEDURES'.