

LAMA2 Antibody (monoclonal) (M01)

Mouse monoclonal antibody raised against a partial recombinant LAMA2.

Catalog # AT2668a

Product Information

Application	WB, IHC, E
Primary Accession	P24043
Other Accession	NM_000426
Reactivity	Human
Host	mouse
Clonality	monoclonal
Isotype	IgG1 Kappa
Clone Names	2D4
Calculated MW	343905

Additional Information

Gene ID	3908
Other Names	Laminin subunit alpha-2, Laminin M chain, Laminin-12 subunit alpha, Laminin-2 subunit alpha, Laminin-4 subunit alpha, Merosin heavy chain, LAMA2, LAMM
Target/Specificity	LAMA2 (NP_000417, 3013 a.a. ~ 3122 a.a) partial recombinant protein with GST tag. MW of the GST tag alone is 26 KDa.
Dilution	WB~~1:500~1000 IHC~~1:100~500 E~~N/A
Format	Clear, colorless solution in phosphate buffered saline, pH 7.2 .
Storage	Store at -20°C or lower. Aliquot to avoid repeated freezing and thawing.
Precautions	LAMA2 Antibody (monoclonal) (M01) is for research use only and not for use in diagnostic or therapeutic procedures.

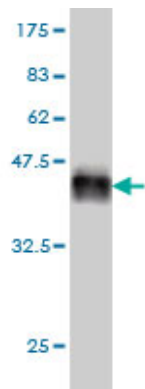
Background

Laminin, an extracellular protein, is a major component of the basement membrane. It is thought to mediate the attachment, migration, and organization of cells into tissues during embryonic development by interacting with other extracellular matrix components. It is composed of three subunits, alpha, beta, and gamma, which are bound to each other by disulfide bonds into a cross-shaped molecule. This gene encodes the alpha 2 chain, which constitutes one of the subunits of laminin 2 (merosin) and laminin 4 (s-merosin). Mutations in this gene have been identified as the cause of congenital merosin-deficient muscular dystrophy. Two transcript variants encoding different proteins have been found for this gene.

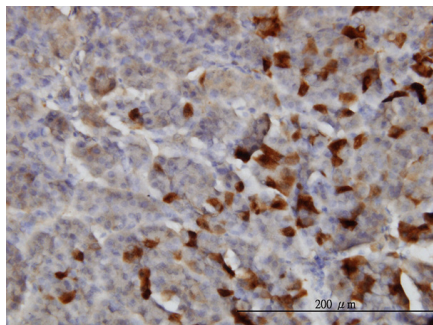
References

1. Advanced Intimal Hyperplasia Without Luminal Narrowing of Leptomeningeal Arteries in CADASIL. Dong H, Ding H, Young K, Blaivas M, Christensen PJ, Wang MM. *Stroke*. 2013 Mar 12;54(3):e1000514.
2. Quiescent fibroblasts exhibit high metabolic activity. Lemons JM, Feng XJ, Bennett BD, Legesse-Miller A, Johnson EL, Raitman I, Pollina EA, Rabitz HA, Rabinowitz JD, Collier HA. *PLoS Biol*. 2010 Oct 19;8(10):e1000514.

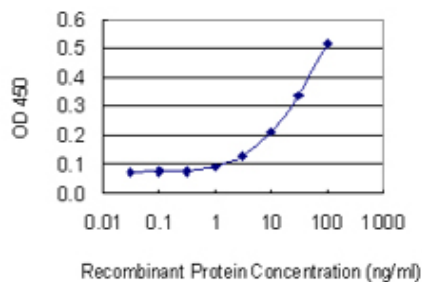
Images



Antibody Reactive Against Recombinant Protein. Western Blot detection against Immunogen (37.84 kDa) .



Immunoperoxidase of monoclonal antibody to LAMA2 on formalin-fixed paraffin-embedded human pancreas. [antibody concentration 1 ug/ml]



Detection limit for recombinant GST tagged LAMA2 is 1 ng/ml as a capture antibody.

Please note: All products are 'FOR RESEARCH USE ONLY. NOT FOR USE IN DIAGNOSTIC OR THERAPEUTIC PROCEDURES'.