

LASS4 Antibody (monoclonal) (M03)

Mouse monoclonal antibody raised against a partial recombinant LASS4.

Catalog # AT2676a

Product Information

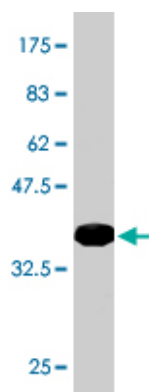
Application	WB, IF, E
Primary Accession	Q9HA82
Other Accession	NM_024552
Reactivity	Human
Host	mouse
Clonality	monoclonal
Isotype	IgG2a Kappa
Clone Names	7D5
Calculated MW	46399

Additional Information

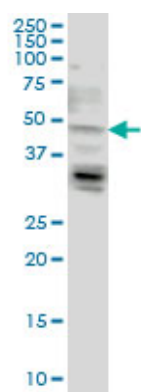
Gene ID	79603
Other Names	Ceramide synthase 4, CerS4, LAG1 longevity assurance homolog 4, CERS4, LASS4
Target/Specificity	LASS4 (NP_078828, 57 a.a. ~ 139 a.a) partial recombinant protein with GST tag. MW of the GST tag alone is 26 KDa.
Dilution	WB~~1:500~1000 IF~~1:50~200 E~~N/A
Format	Clear, colorless solution in phosphate buffered saline, pH 7.2 .
Storage	Store at -20°C or lower. Aliquot to avoid repeated freezing and thawing.
Precautions	LASS4 Antibody (monoclonal) (M03) is for research use only and not for use in diagnostic or therapeutic procedures.

References

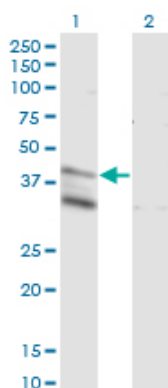
Inherited genetic variant predisposes to aggressive but not indolent prostate cancer. Xu J, et al. Proc Natl Acad Sci U S A, 2010 Feb 2. PMID 20080650. Genetic determinants of circulating sphingolipid concentrations in European populations. Hicks AA, et al. PLoS Genet, 2009 Oct. PMID 19798445. Diversification of transcriptional modulation: large-scale identification and characterization of putative alternative promoters of human genes. Kimura K, et al. Genome Res, 2006 Jan. PMID 16344560. The status, quality, and expansion of the NIH full-length cDNA project: the Mammalian Gene Collection (MGC). Gerhard DS, et al. Genome Res, 2004 Oct. PMID 15489334. Complete sequencing and characterization of 21,243 full-length human cDNAs. Ota T, et al. Nat Genet, 2004 Jan. PMID 14702039.



Antibody Reactive Against Recombinant Protein. Western Blot detection against Immunogen (34.87 KDa) .

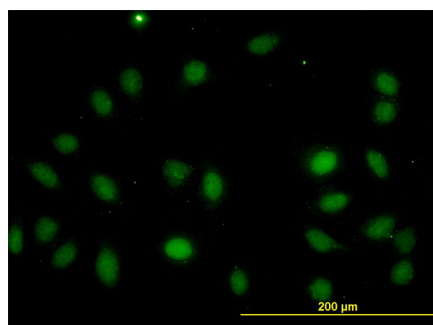


LASS4 monoclonal antibody (M03), clone 7D5 Western Blot analysis of LASS4 expression in HeLa ((Cat # AT2676a)



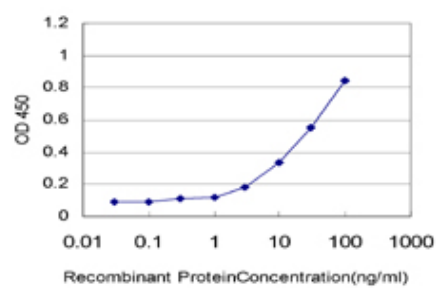
Western Blot analysis of LASS4 expression in transfected 293T cell line by LASS4 monoclonal antibody (M03), clone 7D5.

Lane 1: LASS4 transfected lysate(46.4 KDa).
Lane 2: Non-transfected lysate.



Immunofluorescence of monoclonal antibody to LASS4 on HeLa cell. [antibody concentration 10 ug/ml]

Detection limit for recombinant GST tagged LASS4 is approximately 0.3ng/ml as a capture antibody.



Please note: All products are 'FOR RESEARCH USE ONLY. NOT FOR USE IN DIAGNOSTIC OR THERAPEUTIC PROCEDURES'.