

LASS6 Antibody (monoclonal) (M01)

Mouse monoclonal antibody raised against a partial recombinant LASS6.

Catalog # AT2677a

Product Information

Application	WB, IHC, E
Primary Accession	Q6ZMG9
Other Accession	NM_203463
Reactivity	Human
Host	mouse
Clonality	monoclonal
Isotype	IgG2a Kappa
Clone Names	5H7
Calculated MW	44890

Additional Information

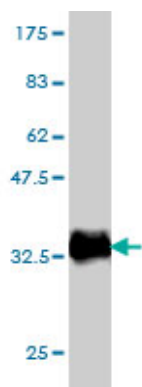
Gene ID	253782
Other Names	Ceramide synthase 6, CerS6, LAG1 longevity assurance homolog 6, CERS6, LASS6
Target/Specificity	LASS6 (NP_982288, 62 a.a. ~ 131 a.a) partial recombinant protein with GST tag. MW of the GST tag alone is 26 KDa.
Dilution	WB~~1:500~1000 IHC~~1:100~500 E~~N/A
Format	Clear, colorless solution in phosphate buffered saline, pH 7.2 .
Storage	Store at -20°C or lower. Aliquot to avoid repeated freezing and thawing.
Precautions	LASS6 Antibody (monoclonal) (M01) is for research use only and not for use in diagnostic or therapeutic procedures.

References

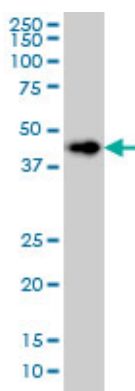
1.Bcl2L13 is a ceramide synthase inhibitor in glioblastoma.Jensen SA, Calvert AE, Volpert G, Kouri FM, Hurley LA, Luciano JP, Wu Y, Chalastanis A, Futerman AH, Stegh AHProc Natl Acad Sci U S A. 2014 Apr 15;111(15):5682-7. doi: 10.1073/pnas.1316700111. Epub 2014 Mar 31.2.Modulation of ceramide synthase activity via dimerization.Laviad EL, Kelly S, Merrill AH Jr, Futerman AHJ Biol Chem. 2012 Apr 26;3.D,l-threo-1-phenyl-2-decanoylamino-3-morpholino-1-propanol (DL-PDMP) increases endoplasmic reticulum stress, autophagy and apoptosis accompanying ceramide accumulation via ceramide synthase 5 protein expression in A549 cells.Yamane M, Miyazawa K, Moriya S, Abe A, Yamane S.Biochimie. 2011 May 7. [Epub ahead of print]4.Ceramide synthases 2, 5, and 6 confer distinct roles in radiation-induced apoptosis in HeLa cells.Mesicek J, Lee H, Feldman T, Jiang X, Skobeleva A, Berdyshev EV, Haimovitz-Friedman A, Fuks Z,

Kolesnick R. Cell Signal. 2010 Apr 18. [Epub ahead of print]5. Acid ceramidase 1 expression correlates with a better prognosis in ER-positive breast cancer. Ruckhaberle E, Holtrich U, Engels K, Hanker L, Gatje R, Metzler D, Karn T, Kaufmann M, Rody A. Climacteric. 2009 Jul 31:1-12. [Epub ahead of print]

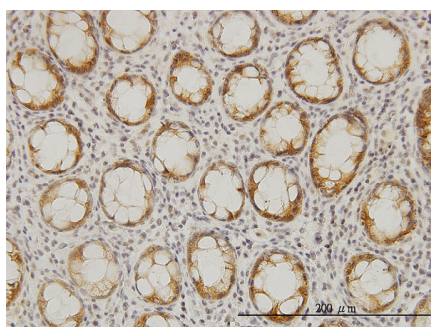
Images



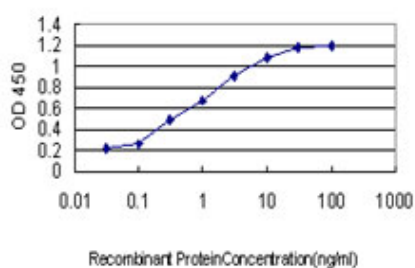
Antibody Reactive Against Recombinant Protein. Western Blot detection against Immunogen (33.44 KDa) .



LASS6 monoclonal antibody (M01), clone 5H7 Western Blot analysis of LASS6 expression in HeLa ((Cat # AT2677a)



Immunoperoxidase of monoclonal antibody to LASS6 on formalin-fixed paraffin-embedded human colon. [antibody concentration 3 ug/ml]



Detection limit for recombinant GST tagged LASS6 is approximately 0.03ng/ml as a capture antibody.

Please note: All products are 'FOR RESEARCH USE ONLY. NOT FOR USE IN DIAGNOSTIC OR THERAPEUTIC PROCEDURES'.