

LASS6 Antibody (monoclonal) (M02)

Mouse monoclonal antibody raised against a partial recombinant LASS6.

Catalog # AT2678a

Product Information

Application	WB, E
Primary Accession	Q6ZMG9
Other Accession	NM_203463
Reactivity	Human, Rat
Host	mouse
Clonality	monoclonal
Isotype	IgG2b Kappa
Clone Names	6B8
Calculated MW	44890

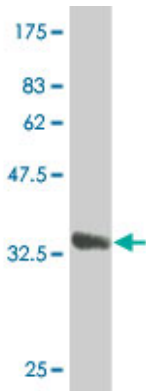
Additional Information

Gene ID	253782
Other Names	Ceramide synthase 6, CerS6, LAG1 longevity assurance homolog 6, CERS6, LASS6
Target/Specificity	LASS6 (NP_982288, 62 a.a. ~ 131 a.a) partial recombinant protein with GST tag. MW of the GST tag alone is 26 KDa.
Dilution	WB~~1:500~1000 E~~N/A
Format	Clear, colorless solution in phosphate buffered saline, pH 7.2 .
Storage	Store at -20°C or lower. Aliquot to avoid repeated freezing and thawing.
Precautions	LASS6 Antibody (monoclonal) (M02) is for research use only and not for use in diagnostic or therapeutic procedures.

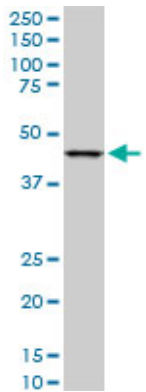
References

Ceramide synthases 2, 5, and 6 confer distinct roles in radiation-induced apoptosis in HeLa cells. Mesicek J, et al. Cell Signal, 2010 Sep. PMID 20406683. Personalized smoking cessation: interactions between nicotine dose, dependence and quit-success genotype score. Rose JE, et al. Mol Med, 2010 Jul-Aug. PMID 20379614. PERK-dependent regulation of ceramide synthase 6 and thioredoxin play a key role in mda-7/IL-24-induced killing of primary human glioblastoma multiforme cells. Yacoub A, et al. Cancer Res, 2010 Feb 1. PMID 20103619. Increased ceramide synthase 2 and 6 mRNA levels in breast cancer tissues and correlation with sphingosine kinase expression. Erez-Roman R, et al. Biochem Biophys Res Commun, 2010 Jan 1. PMID 19912991. Antiapoptotic roles of ceramide-synthase-6-generated C16-ceramide via selective regulation of the ATF6/CHOP arm of ER-stress-response pathways. Senkal CE, et al. FASEB J, 2010 Jan. PMID

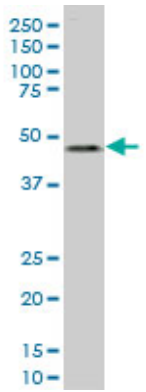
Images



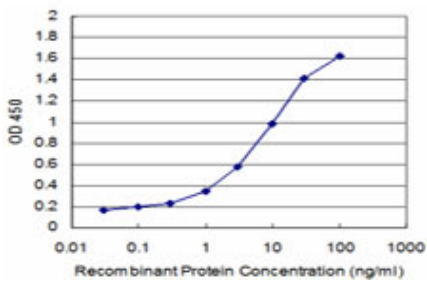
Antibody Reactive Against Recombinant Protein.Western Blot detection against Immunogen (33.44 KDa) .



LASS6 monoclonal antibody (M02), clone 6B8. Western Blot analysis of LASS6 expression in PC-12((Cat # AT2678a)



LASS6 monoclonal antibody (M02), clone 6B8 Western Blot analysis of LASS6 expression in Jurkat ((Cat # AT2678a)



Detection limit for recombinant GST tagged LASS6 is approximately 0.1ng/ml as a capture antibody.

Please note: All products are 'FOR RESEARCH USE ONLY. NOT FOR USE IN DIAGNOSTIC OR THERAPEUTIC PROCEDURES'.