

LDHAL6B Antibody (monoclonal) (M01)

Mouse monoclonal antibody raised against a partial recombinant LDHAL6B.

Catalog # AT2688a

Product Information

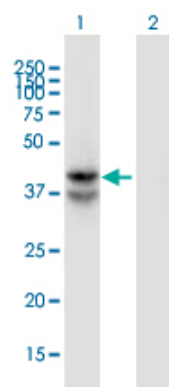
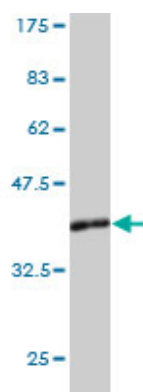
Application	WB, E
Primary Accession	Q9BYZ2
Other Accession	NM_033195
Reactivity	Human
Host	mouse
Clonality	monoclonal
Isotype	IgG2b Kappa
Clone Names	1A3
Calculated MW	41943

Additional Information

Gene ID	92483
Other Names	L-lactate dehydrogenase A-like 6B, LDHAL6B, LDHAL6, LDHL
Target/Specificity	LDHAL6B (NP_005497, 282 a.a. ~ 381 a.a) partial recombinant protein with GST tag. MW of the GST tag alone is 26 KDa.
Dilution	WB~~1:500~1000 E~~N/A
Format	Clear, colorless solution in phosphate buffered saline, pH 7.2 .
Storage	Store at -20°C or lower. Aliquot to avoid repeated freezing and thawing.
Precautions	LDHAL6B Antibody (monoclonal) (M01) is for research use only and not for use in diagnostic or therapeutic procedures.

Images

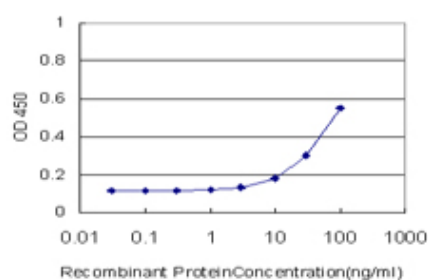
Antibody Reactive Against Recombinant Protein.Western
Blot detection against Immunogen (36.74 KDa) .



Western Blot analysis of LDHAL6B expression in transfected 293T cell line by LDHAL6B monoclonal antibody (M01), clone 1A3.

Lane 1: LDHAL6B transfected lysate (Predicted MW: 42 KDa).

Lane 2: Non-transfected lysate.



Detection limit for recombinant GST tagged LDHAL6B is approximately 3ng/ml as a capture antibody.

Please note: All products are 'FOR RESEARCH USE ONLY. NOT FOR USE IN DIAGNOSTIC OR THERAPEUTIC PROCEDURES'.