

LDHB Antibody (monoclonal) (M01)

Mouse monoclonal antibody raised against a full length recombinant LDHB.

Catalog # AT2689a

Product Information

Application	WB, IHC, IF, E
Primary Accession	P07195
Other Accession	BC002362
Reactivity	Human
Host	mouse
Clonality	monoclonal
Isotype	IgG1 kappa
Clone Names	2H6
Calculated MW	36638

Additional Information

Gene ID	3945
Other Names	L-lactate dehydrogenase B chain, LDH-B, LDH heart subunit, LDH-H, Renal carcinoma antigen NY-REN-46, LDHB
Target/Specificity	LDHB (AAH02362.1, 1 a.a. ~ 334 a.a) full-length recombinant protein with GST tag. MW of the GST tag alone is 26 KDa.
Dilution	WB~~1:500~1000 IHC~~1:100~500 IF~~1:50~200 E~~N/A
Format	Clear, colorless solution in phosphate buffered saline, pH 7.2 .
Storage	Store at -20°C or lower. Aliquot to avoid repeated freezing and thawing.
Precautions	LDHB Antibody (monoclonal) (M01) is for research use only and not for use in diagnostic or therapeutic procedures.

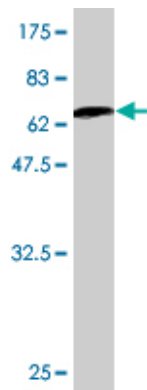
Background

This gene encodes an enzyme which catalyzes the reversible conversion of lactate and pyruvate, and NAD and NADH, in the glycolytic pathway. Mutations in this gene are associated with lactate dehydrogenase B deficiency. Pseudogenes have been identified on the X chromosome and on chromosome. Multiple alternatively spliced variants, encoding the same protein, have been identified.

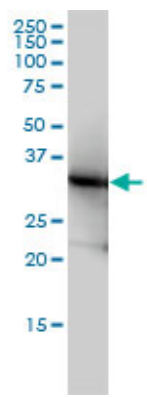
References

1.Pilot application of iTRAQ to the retinal disease Macular Telangiectasia.Len AC, Powner MB, Zhu L, Hageman GS, Song X, Fruttiger M, Gillies MC.J Proteome Res. 2011 Nov 21.2.Quantitative Proteomics

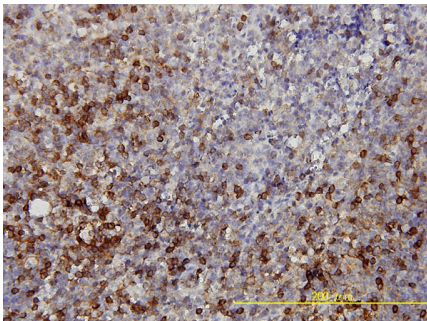
Images



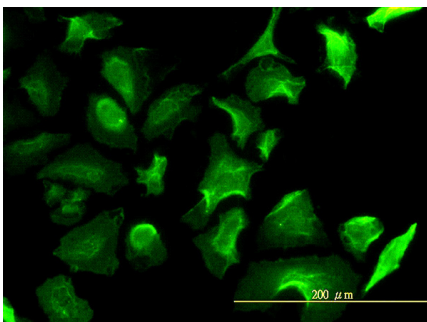
Antibody Reactive Against Recombinant Protein.Western Blot detection against Immunogen (62.48 KDa) .



LDHB monoclonal antibody (M01), clone 2H6 Western Blot analysis of LDHB expression in HeLa ((Cat # AT2689a)

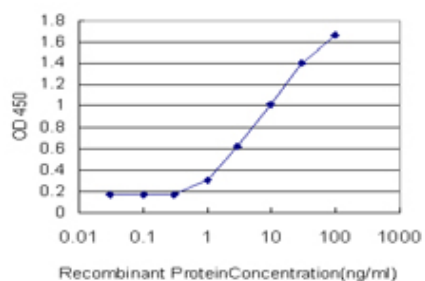


Immunoperoxidase of monoclonal antibody to LDHB on formalin-fixed paraffin-embedded human tonsil tissue. [antibody concentration 5 ug/ml]



Immunofluorescence of monoclonal antibody to LDHB on HeLa cell. [antibody concentration 10 ug/ml]

Detection limit for recombinant GST tagged LDHB is approximately 1ng/ml as a capture antibody.



Citations

- [LDHB and FABP4 are Associated With Progression and Poor Prognosis of Pancreatic Ductal Adenocarcinomas.](#)

Please note: All products are 'FOR RESEARCH USE ONLY. NOT FOR USE IN DIAGNOSTIC OR THERAPEUTIC PROCEDURES'.