

# LDLRAP1 Antibody (monoclonal) (M01)

Mouse monoclonal antibody raised against a full length recombinant LDLRAP1.

Catalog # AT2691a

## Product Information

---

<b>Application</b>	WB, IHC, IF, E
<b>Primary Accession</b>	<a href="#">Q5SW96</a>
<b>Other Accession</b>	<a href="#">BC029770</a>
<b>Reactivity</b>	Human
<b>Host</b>	mouse
<b>Clonality</b>	monoclonal
<b>Isotype</b>	IgG1 kappa
<b>Clone Names</b>	4G4-D5
<b>Calculated MW</b>	33885

## Additional Information

---

<b>Gene ID</b>	26119
<b>Other Names</b>	Low density lipoprotein receptor adapter protein 1, Autosomal recessive hypercholesterolemia protein, LDLRAP1, ARH
<b>Target/Specificity</b>	LDLRAP1 (AAH29770, 1 a.a. ~ 263 a.a) full-length recombinant protein with GST tag. MW of the GST tag alone is 26 KDa.
<b>Dilution</b>	WB~~1:500~1000 IHC~~1:100~500 IF~~1:50~200 E~~N/A
<b>Format</b>	Clear, colorless solution in phosphate buffered saline, pH 7.2 .
<b>Storage</b>	Store at -20°C or lower. Aliquot to avoid repeated freezing and thawing.
<b>Precautions</b>	LDLRAP1 Antibody (monoclonal) (M01) is for research use only and not for use in diagnostic or therapeutic procedures.

## Background

---

The protein encoded by this gene is a cytosolic protein which contains a phosphotyrosine binding (PTD) domain. The PTD domain has been found to interact with the cytoplasmic tail of the LDL receptor. Mutations in this gene lead to LDL receptor malfunction and cause the disorder autosomal recessive hypercholesterolaemia.

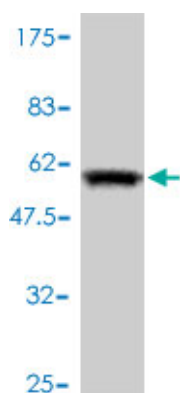
## References

---

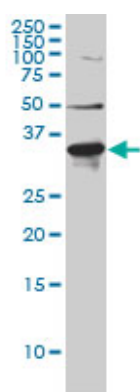
1.Disabled-2 Protein Facilitates Assembly Polypeptide-2-independent Recruitment of Cystic Fibrosis Transmembrane Conductance Regulator to Endocytic Vesicles in Polarized Human Airway Epithelial

Cells.Cihil KM, Ellinger P, Fellows A, Stolz DB, Madden DR, Swiatecka-Urban A.J Biol Chem. 2012 Apr 27;287(18):15087-99. Epub 2012 Mar 7.2.Autosomal recessive hypercholesterolemia in Spanish kindred due to a large deletion in the ARH gene.Quagliarini F, Vallve JC, Campagna F, Alvaro A, Fuentes-Jimenez FJ, Sirinian MI, Meloni F, Masana L, Arca M.Mol Genet Metab. 2007 Nov;92(3):243-8. Epub 2007 Aug 7.

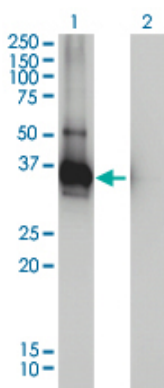
## Images



Antibody Reactive Against Recombinant Protein.Western Blot detection against Immunogen (54.67 KDa) .

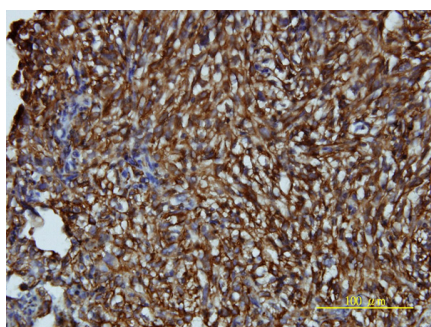


LDLRAP1 monoclonal antibody (M01), clone 4G4-D5  
Western Blot analysis of LDLRAP1 expression in Hela S3  
NE ( (Cat # AT2691a )



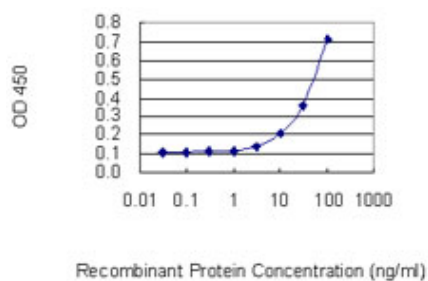
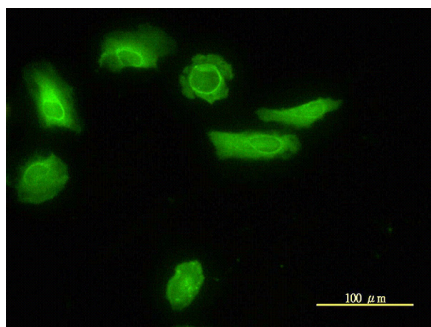
Western Blot analysis of LDLRAP1 expression in  
transfected 293T cell line by LDLRAP1 monoclonal  
antibody (M01), clone 4G4-D5.

Lane 1: LDLRAP1 transfected lysate(29 KDa).  
Lane 2: Non-transfected lysate.



Immunoperoxidase of monoclonal antibody to LDLRAP1  
on formalin-fixed paraffin-embedded human malignant  
fibrous histiocytoma tissue. [antibody concentration 2  
ug/ml]

Immunofluorescence of monoclonal antibody to LDLRAP1  
on HeLa cell. [antibody concentration 10 ug/ml]



Detection limit for recombinant GST tagged LDLRAP1 is 1 ng/ml as a capture antibody.

Please note: All products are 'FOR RESEARCH USE ONLY. NOT FOR USE IN DIAGNOSTIC OR THERAPEUTIC PROCEDURES'.