

## LEP Antibody (monoclonal) (M01)

Mouse monoclonal antibody raised against a full length recombinant LEP.

Catalog # AT2694a

### Product Information

---

<b>Application</b>	WB, E
<b>Primary Accession</b>	<a href="#">P41159</a>
<b>Other Accession</b>	<a href="#">BC060830</a>
<b>Reactivity</b>	Human
<b>Host</b>	mouse
<b>Clonality</b>	monoclonal
<b>Isotype</b>	IgG2b Kappa
<b>Clone Names</b>	3G1-1C9
<b>Calculated MW</b>	18641

### Additional Information

---

<b>Gene ID</b>	3952
<b>Other Names</b>	Leptin, Obese protein, Obesity factor, LEP, OB, OBS
<b>Target/Specificity</b>	LEP (AAH60830.1, 22 a.a. ~ 167 a.a) full-length recombinant protein with GST tag. MW of the GST tag alone is 26 KDa.
<b>Dilution</b>	WB~~1:500~1000 E~~N/A
<b>Format</b>	Clear, colorless solution in phosphate buffered saline, pH 7.2 .
<b>Storage</b>	Store at -20°C or lower. Aliquot to avoid repeated freezing and thawing.
<b>Precautions</b>	LEP Antibody (monoclonal) (M01) is for research use only and not for use in diagnostic or therapeutic procedures.

### Background

---

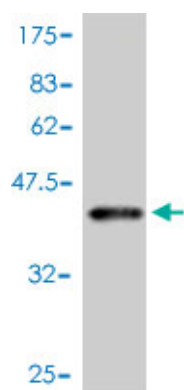
This gene encodes a protein that is secreted by white adipocytes, and which plays a major role in the regulation of body weight. This protein, which acts through the leptin receptor, functions as part of a signaling pathway that can inhibit food intake and/or regulate energy expenditure to maintain constancy of the adipose mass. This protein also has several endocrine functions, and is involved in the regulation of immune and inflammatory responses, hematopoiesis, angiogenesis and wound healing. Mutations in this gene and/or its regulatory regions cause severe obesity, and morbid obesity with hypogonadism. This gene has also been linked to type 2 diabetes mellitus development.

### References

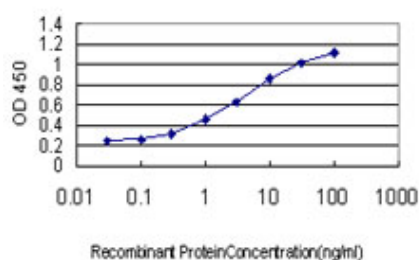
---

Associations of markers in 11 obesity candidate genes with maximal weight loss and weight regain in the SOS bariatric surgery cases. Sarzynski MA, et al. *Int J Obes (Lond)*, 2010 Aug 24. PMID 20733583. A genetic association study of maternal and fetal candidate genes that predispose to preterm prelabor rupture of membranes (PROM). Romero R, et al. *Am J Obstet Gynecol*, 2010 Jul 29. PMID 20673868. Association of the leptin gene with knee osteoarthritis susceptibility in a Han Chinese population: a case-control study. Qin J, et al. *J Hum Genet*, 2010 Jul 22. PMID 20664554. Candidate molecular pathway genes related to appetite regulatory neural network, adipocyte homeostasis and obesity: results from the CARDIA Study. Friedlander Y, et al. *Ann Hum Genet*, 2010 Sep 1. PMID 20642810. Variation at the NFATC2 Locus Increases the Risk of Thiazolidinedione-Induced Edema in the Diabetes REduction Assessment with ramipril and rosiglitazone Medication (DREAM) Study. Bailey SD, et al. *Diabetes Care*, 2010 Jul 13. PMID 20628086.

## Images



Antibody Reactive Against Recombinant Protein. Western Blot detection against Immunogen (41.8 KDa) .



Detection limit for recombinant GST tagged LEP is approximately 0.1 ng/ml as a capture antibody.

Please note: All products are 'FOR RESEARCH USE ONLY. NOT FOR USE IN DIAGNOSTIC OR THERAPEUTIC PROCEDURES'.