

LGALS1 Antibody (monoclonal) (M01)

Mouse monoclonal antibody raised against a full length recombinant LGALS1.

Catalog # AT2700a

Product Information

Application	WB, IF, IP, E
Primary Accession	P09382
Other Accession	BC001693
Reactivity	Human
Host	Mouse
Clonality	monoclonal
Isotype	IgG2b Lambda
Clone Names	1E8-1B2
Calculated MW	14716

Additional Information

Gene ID	3956
Other Names	Galectin-1, Gal-1, 14 kDa laminin-binding protein, HLBP14, 14 kDa lectin, Beta-galactoside-binding lectin L-14-I, Galaptin, HBL, HPL, Lactose-binding lectin 1, Lectin galactoside-binding soluble 1, Putative MAPK-activating protein PM12, S-Lac lectin 1, LGALS1
Target/Specificity	LGALS1 (AAH01693, 1 a.a. ~ 135 a.a) full-length recombinant protein with GST tag. MW of the GST tag alone is 26 KDa.
Dilution	WB~~1:500~1000 IF~~1:50~200 IP~~N/A E~~N/A
Format	Clear, colorless solution in phosphate buffered saline, pH 7.2 .
Storage	Store at -20°C or lower. Aliquot to avoid repeated freezing and thawing.
Precautions	LGALS1 Antibody (monoclonal) (M01) is for research use only and not for use in diagnostic or therapeutic procedures.

Background

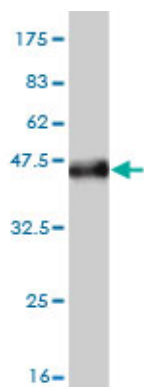
The galectins are a family of beta-galactoside-binding proteins implicated in modulating cell-cell and cell-matrix interactions. This gene product may act as an autocrine negative growth factor that regulates cell proliferation.

References

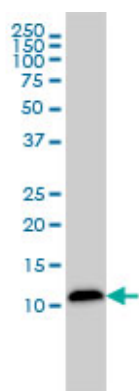
1.Galectin-1 and Galectin-3 Mediate Protocadherin-24-Dependent Membrane Localization of β -catenin in

Colon Cancer Cell Line HCT116.Ose R, Ohara O, Nagase T.Current Chemical Genomics, 2012, 6, (Suppl 1-M3) 18-262.Quantitative and temporal proteome analysis of butyrate-treated colorectal cancer cells.Tan HT, Tan S, Lin Q, Lim TK, Hew CL, Chung MC.Mol Cell Proteomics. 2008 Jun;7(6):1174-85. Epub 2008 Mar 14.

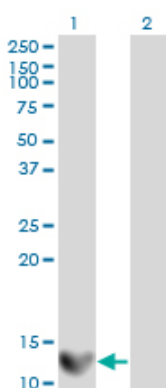
Images



Antibody Reactive Against Recombinant Protein.Western Blot detection against Immunogen (40.59 KDa) .

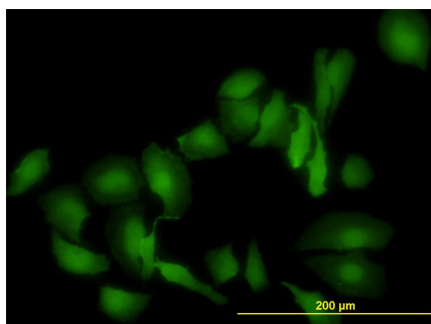


LGALS1 monoclonal antibody (M01), clone 1E8-1B2
Western Blot analysis of LGALS1 expression in HepG2 (Cat # AT2700a)



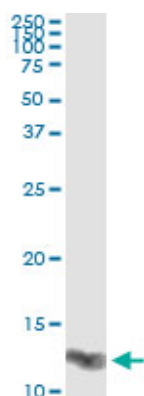
Western Blot analysis of LGALS1 expression in transfected 293T cell line by LGALS1 monoclonal antibody (M01), clone 1E8-1B2.

Lane 1: LGALS1 transfected lysate(14.7 KDa).
Lane 2: Non-transfected lysate.

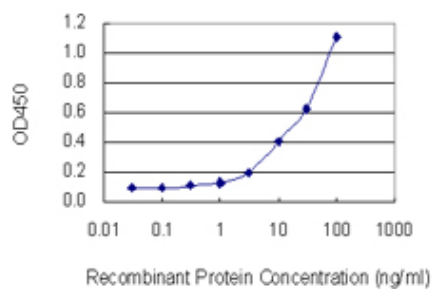


Immunofluorescence of monoclonal antibody to LGALS1 on HeLa cell. [antibody concentration 10 ug/ml]

Immunoprecipitation of LGALS1 transfected lysate using anti-LGALS1 monoclonal antibody and Protein A Magnetic Bead ([U0007](#)), and immunoblotted with LGALS1 MaxPab



rabbit polyclonal antibody.



Detection limit for recombinant GST tagged LGALS1 is 1 ng/ml as a capture antibody.

Please note: All products are 'FOR RESEARCH USE ONLY. NOT FOR USE IN DIAGNOSTIC OR THERAPEUTIC PROCEDURES'.