

LHX6 Antibody (monoclonal) (M05)

Mouse monoclonal antibody raised against a partial recombinant LHX6.

Catalog # AT2710a

Product Information

Application	WB
Primary Accession	Q9UPM6
Other Accession	NM_014368
Reactivity	Human, Mouse
Host	mouse
Clonality	monoclonal
Isotype	IgG2b Kappa
Clone Names	3E9
Calculated MW	40045

Additional Information

Gene ID	26468
Other Names	LIM/homeobox protein Lhx6, LIM homeobox protein 6, LIM/homeobox protein Lhx61, LHX6, LHX61
Target/Specificity	LHX6 (NP_055183, 274 a.a. ~ 363 a.a) partial recombinant protein with GST tag. MW of the GST tag alone is 26 KDa.
Dilution	WB~~1:500~1000
Format	Clear, colorless solution in phosphate buffered saline, pH 7.2 .
Storage	Store at -20°C or lower. Aliquot to avoid repeated freezing and thawing.
Precautions	LHX6 Antibody (monoclonal) (M05) is for research use only and not for use in diagnostic or therapeutic procedures.

Background

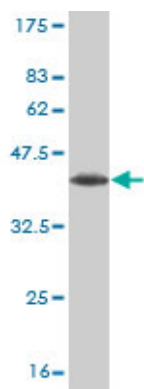
This gene encodes a member of a large protein family that contains the LIM domain, a unique cysteine-rich zinc-binding domain. The encoded protein may function as a transcriptional regulator and may be involved in the control of differentiation and development of neural and lymphoid cells. Two alternatively spliced transcript variants encoding distinct isoforms have been described for this gene. Alternatively spliced transcript variants have been identified, but their biological validity has not been determined.

References

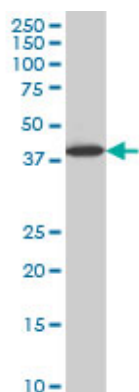
Personalized smoking cessation: interactions between nicotine dose, dependence and quit-success genotype

score. Rose JE, et al. Mol Med, 2010 Jul-Aug. PMID 20379614. Human variation in alcohol response is influenced by variation in neuronal signaling genes. Joslyn G, et al. Alcohol Clin Exp Res, 2010 May. PMID 20201926. LHX6 is a sensitive methylation marker in head and neck carcinomas. Estacio MR, et al. Oncogene, 2006 Aug 17. PMID 16732332. The LIFEdb database in 2006. Mehrle A, et al. Nucleic Acids Res, 2006 Jan 1. PMID 16381901. Diversification of transcriptional modulation: large-scale identification and characterization of putative alternative promoters of human genes. Kimura K, et al. Genome Res, 2006 Jan. PMID 16344560.

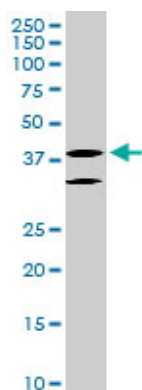
Images



Antibody Reactive Against Recombinant Protein. Western Blot detection against Immunogen (35.64 KDa) .



LHX6 monoclonal antibody (M05), clone 3E8 Western Blot analysis of LHX6 expression in HepG2 ((Cat # AT2710a)



LHX6 monoclonal antibody (M05), clone 3E8. Western Blot analysis of LHX6 expression in NIH/3T3 ((Cat # AT2710a)

Please note: All products are 'FOR RESEARCH USE ONLY. NOT FOR USE IN DIAGNOSTIC OR THERAPEUTIC PROCEDURES'.