

LIG1 Antibody (monoclonal) (M01)

Mouse monoclonal antibody raised against a partial recombinant LIG1.

Catalog # AT2712a

Product Information

Application	WB, IHC, E
Primary Accession	P18858
Other Accession	NM_000234
Reactivity	Human
Host	mouse
Clonality	monoclonal
Isotype	IgG2a Kappa
Clone Names	10G12
Calculated MW	101736

Additional Information

Gene ID	3978
Other Names	DNA ligase 1, DNA ligase I, Polydeoxyribonucleotide synthase [ATP] 1, LIG1
Target/Specificity	LIG1 (NP_000225, 810 a.a. ~ 919 a.a) partial recombinant protein with GST tag. MW of the GST tag alone is 26 KDa.
Dilution	WB~~1:500~1000 IHC~~1:100~500 E~~N/A
Format	Clear, colorless solution in phosphate buffered saline, pH 7.2 .
Storage	Store at -20°C or lower. Aliquot to avoid repeated freezing and thawing.
Precautions	LIG1 Antibody (monoclonal) (M01) is for research use only and not for use in diagnostic or therapeutic procedures.

Background

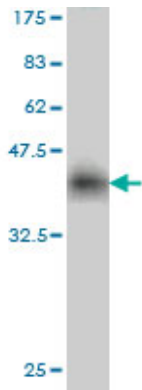
LIG1 encodes DNA ligase I, with functions in DNA replication and the base excision repair process. Mutations in LIG1 that lead to DNA ligase I deficiency result in immunodeficiency and increased sensitivity to DNA-damaging agents.

References

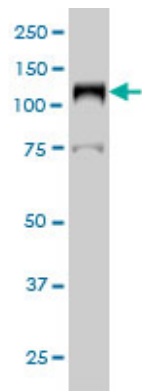
Variation at the NFATC2 Locus Increases the Risk of Thiazolinedinedione-Induced Edema in the Diabetes REduction Assessment with ramipril and rosiglitazone Medication (DREAM) Study. Bailey SD, et al. Diabetes Care, 2010 Jul 13. PMID 20628086.XPC genetic polymorphisms correlate with the response to imatinib treatment in patients with chronic phase chronic myeloid leukemia. Guillem VM, et al. Am J Hematol, 2010

Jul. PMID 20575039.Polymorphisms in the base excision repair pathway and graft-versus-host disease. Arora M, et al. Leukemia, 2010 Aug. PMID 20574454.Comprehensive screen of genetic variation in DNA repair pathway genes and postmenopausal breast cancer risk. Monsees GM, et al. Breast Cancer Res Treat, 2010 May 23. PMID 20496165.A Large-scale genetic association study of esophageal adenocarcinoma risk. Liu CY, et al. Carcinogenesis, 2010 Jul. PMID 20453000.

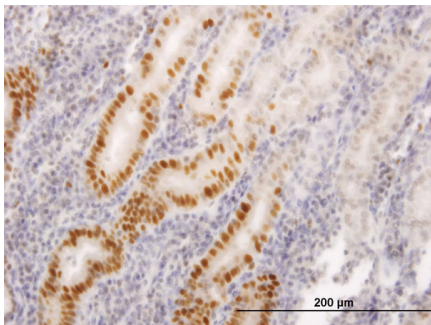
Images



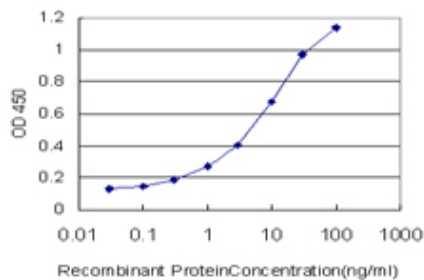
Antibody Reactive Against Recombinant Protein.Western Blot detection against Immunogen (37.84 KDa) .



LIG1 monoclonal antibody (M01), clone AG12 Western Blot analysis of LIG1 expression in HeLa S3 NE ((Cat # AT2712a)



Immunoperoxidase of monoclonal antibody to LIG1 on formalin-fixed paraffin-embedded human stomach. [antibody concentration 1.2 ug/ml]



Detection limit for recombinant GST tagged LIG1 is approximately 0.3ng/ml as a capture antibody.

Please note: All products are 'FOR RESEARCH USE ONLY. NOT FOR USE IN DIAGNOSTIC OR THERAPEUTIC PROCEDURES'.