

LMO2 Antibody (monoclonal) (M01)

Mouse monoclonal antibody raised against a full length recombinant LMO2.

Catalog # AT2722a

Product Information

Application	WB
Primary Accession	P25791
Other Accession	BC034041
Reactivity	Human
Host	mouse
Clonality	monoclonal
Isotype	IgG1 Kappa
Clone Names	6B8
Calculated MW	18358

Additional Information

Gene ID	4005
Other Names	Rhombotin-2, Cysteine-rich protein TTG-2, LIM domain only protein 2, LMO-2, T-cell translocation protein 2, LMO2, RBTN2, RBTNL1, RHOM2, TTG2
Target/Specificity	LMO2 (AAH34041, 1 a.a. ~ 158 a.a) full-length recombinant protein with GST tag. MW of the GST tag alone is 26 KDa.
Dilution	WB~~1:500~1000
Format	Clear, colorless solution in phosphate buffered saline, pH 7.2 .
Storage	Store at -20°C or lower. Aliquot to avoid repeated freezing and thawing.
Precautions	LMO2 Antibody (monoclonal) (M01) is for research use only and not for use in diagnostic or therapeutic procedures.

Background

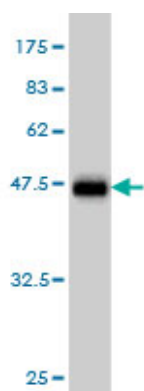
LMO2 encodes a cysteine-rich, two LIM-domain protein that is required for yolk sac erythropoiesis. The LMO2 protein has a central and crucial role in hematopoietic development and is highly conserved. The LMO2 transcription start site is located approximately 25 kb downstream from the 11p13 T-cell translocation cluster (11p13 ttc), where a number T-cell acute lymphoblastic leukemia-specific translocations occur. Alternative splicing results in multiple transcript variants encoding different isoforms.

References

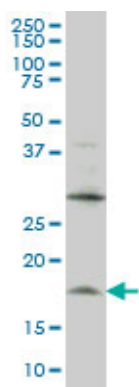
Immunoarchitectural patterns in follicular lymphoma: efficacy of HGAL and LMO2 in the detection of the

interfollicular and diffuse components. Younes SF, et al. Am J Surg Pathol, 2010 Sep. PMID 20697248. Expression of LMO2 is associated with t(14;18)/IGH-BCL2 fusion but not BCL6 translocations in diffuse large B-cell lymphoma. Durnick DK, et al. Am J Clin Pathol, 2010 Aug. PMID 20660332. Aberrant induction of LMO2 by the E2A-HLF chimeric transcription factor and its implication in leukemogenesis of B-precursor ALL with t(17;19). Hirose K, et al. Blood, 2010 Aug 12. PMID 20519628. Homo-binding character of LMO2 isoforms and their both synergic and antagonistic functions in regulating hematopoietic-related target genes. Sun W, et al. J Biomed Sci, 2010 Mar 27. PMID 20346173. Association between genetic variants in VEGF, ERCC3 and occupational benzene haematotoxicity. Hosgood HD 3rd, et al. Occup Environ Med, 2009 Dec. PMID 19773279.

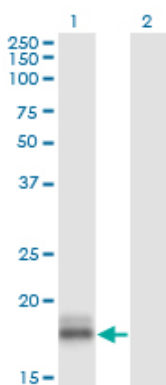
Images



Antibody Reactive Against Recombinant Protein. Western Blot detection against Immunogen (43.12 KDa) .



LMO2 monoclonal antibody (M01), clone 6B8 Western Blot analysis of LMO2 expression in HL-60 ((Cat # AT2722a)



Western Blot analysis of LMO2 expression in transfected 293T cell line by LMO2 monoclonal antibody (M01), clone 6B8.

Lane 1: LMO2 transfected lysate(18.4 KDa).
Lane 2: Non-transfected lysate.

Please note: All products are 'FOR RESEARCH USE ONLY. NOT FOR USE IN DIAGNOSTIC OR THERAPEUTIC PROCEDURES'.