

# LMTK3 Antibody (monoclonal) (M02)

Mouse monoclonal antibody raised against a partial recombinant LMTK3.

Catalog # AT2728a

## Product Information

---

<b>Application</b>	WB, E
<b>Primary Accession</b>	<a href="#">Q96Q04</a>
<b>Other Accession</b>	<a href="#">XM_055866</a>
<b>Reactivity</b>	Human
<b>Host</b>	mouse
<b>Clonality</b>	monoclonal
<b>Isotype</b>	IgG1 Kappa
<b>Clone Names</b>	2H6
<b>Calculated MW</b>	153661

## Additional Information

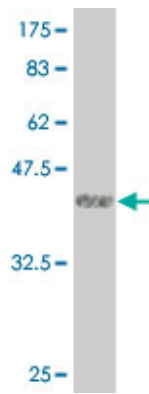
---

<b>Gene ID</b>	114783
<b>Other Names</b>	Serine/threonine-protein kinase LMTK3, Lemur tyrosine kinase 3, LMTK3, KIAA1883, TYKLM3
<b>Target/Specificity</b>	LMTK3 (XP_055866, 1151 a.a. ~ 1250 a.a) partial recombinant protein with GST tag. MW of the GST tag alone is 26 KDa.
<b>Dilution</b>	WB~~1:500~1000 E~~N/A
<b>Format</b>	Clear, colorless solution in phosphate buffered saline, pH 7.2 .
<b>Storage</b>	Store at -20°C or lower. Aliquot to avoid repeated freezing and thawing.
<b>Precautions</b>	LMTK3 Antibody (monoclonal) (M02) is for research use only and not for use in diagnostic or therapeutic procedures.

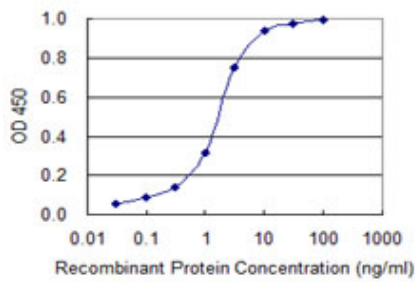
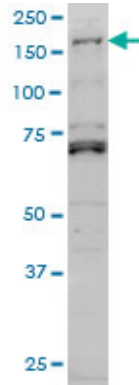
## Images

---

Antibody Reactive Against Recombinant Protein.Western Blot detection against Immunogen (36.63 KDa) .



LMTK3 monoclonal antibody (M02), clone 2H6 Western Blot analysis of LMTK3 expression in HeLa S3 NE (Cat # AT2728a)



Detection limit for recombinant GST tagged LMTK3 is 0.03 ng/ml as a capture antibody.

Please note: All products are 'FOR RESEARCH USE ONLY. NOT FOR USE IN DIAGNOSTIC OR THERAPEUTIC PROCEDURES'.