

LOC143241 Antibody (monoclonal) (M01)

Mouse monoclonal antibody raised against a full length recombinant LOC143241.

Catalog # AT2732a

Product Information

Application	WB, IF, E
Primary Accession	Q8WWB3
Other Accession	BC019250
Reactivity	Human
Host	mouse
Clonality	monoclonal
Isotype	IgG2b kappa
Clone Names	1B11
Calculated MW	20893

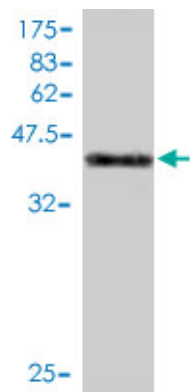
Additional Information

Gene ID	143241
Other Names	DPY30 domain-containing protein 1, DYDC1, DPY30D1
Target/Specificity	LOC143241 (AAH19250, 1 a.a. ~ 177 a.a) full-length recombinant protein with GST tag. MW of the GST tag alone is 26 KDa.
Dilution	WB~~1:500~1000 IF~~1:50~200 E~~N/A
Format	Clear, colorless solution in phosphate buffered saline, pH 7.2 .
Storage	Store at -20°C or lower. Aliquot to avoid repeated freezing and thawing.
Precautions	LOC143241 Antibody (monoclonal) (M01) is for research use only and not for use in diagnostic or therapeutic procedures.

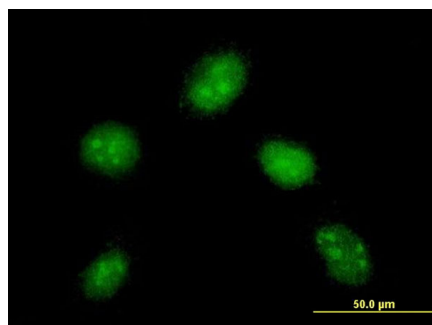
References

A scan of chromosome 10 identifies a novel locus showing strong association with late-onset Alzheimer disease. Grupe A, et al. Am J Hum Genet, 2006 Jan. PMID 16385451. Towards a proteome-scale map of the human protein-protein interaction network. Rual JF, et al. Nature, 2005 Oct 20. PMID 16189514. The status, quality, and expansion of the NIH full-length cDNA project: the Mammalian Gene Collection (MGC). Gerhard DS, et al. Genome Res, 2004 Oct. PMID 15489334. The DNA sequence and comparative analysis of human chromosome 10. Deloukas P, et al. Nature, 2004 May 27. PMID 15164054. Complete sequencing and characterization of 21,243 full-length human cDNAs. Ota T, et al. Nat Genet, 2004 Jan. PMID 14702039.

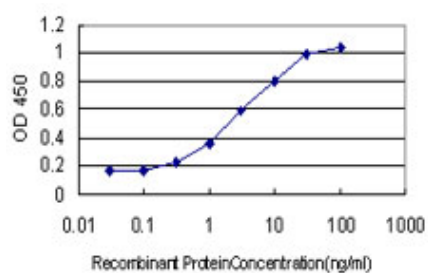
Images



Antibody Reactive Against Recombinant Protein. Western Blot detection against Immunogen (45.21 KDa) .



Immunofluorescence of monoclonal antibody to DYDC1 on HeLa cell . [antibody concentration 10 ug/ml]



Detection limit for recombinant GST tagged DYDC1 is approximately 0.1 ng/ml as a capture antibody.

Please note: All products are 'FOR RESEARCH USE ONLY. NOT FOR USE IN DIAGNOSTIC OR THERAPEUTIC PROCEDURES'.