

LRG1 Antibody (monoclonal) (M01)

Mouse monoclonal antibody raised against a full length recombinant LRG1.

Catalog # AT2738a

Product Information

Application	WB, E
Primary Accession	P02750
Other Accession	BC034389
Reactivity	Human
Host	mouse
Clonality	monoclonal
Isotype	IgG2b Kappa
Clone Names	2E4
Calculated MW	38178

Additional Information

Gene ID	116844
Other Names	Leucine-rich alpha-2-glycoprotein, LRG, LRG1, LRG
Target/Specificity	LRG1 (AAH34389, 37 a.a. ~ 347 a.a) full-length recombinant protein with GST tag. MW of the GST tag alone is 26 KDa.
Dilution	WB~~1:500~1000 E~~N/A
Format	Clear, colorless solution in phosphate buffered saline, pH 7.2 .
Storage	Store at -20°C or lower. Aliquot to avoid repeated freezing and thawing.
Precautions	LRG1 Antibody (monoclonal) (M01) is for research use only and not for use in diagnostic or therapeutic procedures.

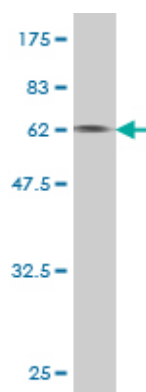
Background

The leucine-rich repeat (LRR) family of proteins, including LRG1, have been shown to be involved in protein-protein interaction, signal transduction, and cell adhesion and development. LRG1 is expressed during granulocyte differentiation (O'Donnell et al., 2002 [PubMed 12223515]).

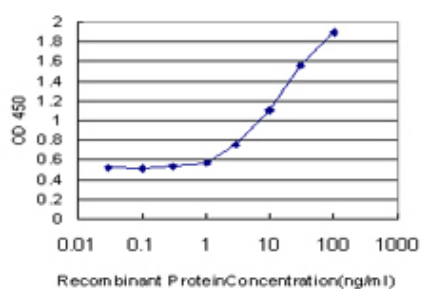
References

1. Proteomic profiling for the identification of serum diagnostic biomarkers for abdominal and thoracic aortic aneurysms. Satoh K, Maniwa T, Oda T, Matsumoto K. Proteome Sci. 2013 Jun 27;11(1):27. doi: 10.1186/1477-5956-11-27. 2. MiRNA-335 Suppresses Neuroblastoma Cell Invasiveness By Direct Targeting of Multiple Genes from the non-Canonical TGF- β Signalling Pathway. Lynch J, Fay J, Meehan M, Bryan K, Watters

Images



Antibody Reactive Against Recombinant Protein. Western Blot detection against Immunogen (59.95 KDa) .



Detection limit for recombinant GST tagged LRG1 is approximately 0.3ng/ml as a capture antibody.

Please note: All products are 'FOR RESEARCH USE ONLY. NOT FOR USE IN DIAGNOSTIC OR THERAPEUTIC PROCEDURES'.