

# LUC7L Antibody (monoclonal) (M05)

Mouse monoclonal antibody raised against a partial recombinant LUC7L.

Catalog # AT2748a

## Product Information

---

<b>Application</b>	WB, IF, IP
<b>Primary Accession</b>	<a href="#">Q9NQ29</a>
<b>Other Accession</b>	<a href="#">NM_018032</a>
<b>Reactivity</b>	Human
<b>Host</b>	mouse
<b>Clonality</b>	monoclonal
<b>Isotype</b>	IgG1 Kappa
<b>Clone Names</b>	2D10
<b>Calculated MW</b>	43728

## Additional Information

---

<b>Gene ID</b>	55692
<b>Other Names</b>	Putative RNA-binding protein Luc7-like 1, Putative SR protein LUC7B1, SR+89, LUC7L, LUC7L1
<b>Target/Specificity</b>	LUC7L (NP_060502, 1 a.a. ~ 111 a.a) partial recombinant protein with GST tag. MW of the GST tag alone is 26 KDa.
<b>Dilution</b>	WB~~1:500~1000 IF~~1:50~200 IP~~N/A
<b>Format</b>	Clear, colorless solution in phosphate buffered saline, pH 7.2 .
<b>Storage</b>	Store at -20°C or lower. Aliquot to avoid repeated freezing and thawing.
<b>Precautions</b>	LUC7L Antibody (monoclonal) (M05) is for research use only and not for use in diagnostic or therapeutic procedures.

## Background

---

The LUC7L gene may represent a mammalian heterochromatic gene, encoding a putative RNA-binding protein similar to the yeast Luc7p subunit of the U1 snRNP splicing complex that is normally required for 5-prime splice site selection (Tufarelli et al., 2001 [PubMed 11170747]).

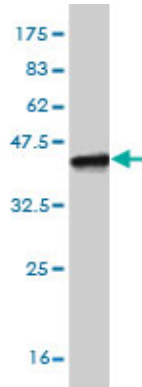
## References

---

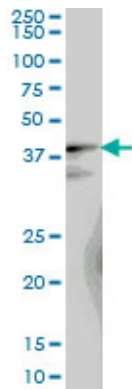
Variation at the NFATC2 Locus Increases the Risk of Thiazolinedione-Induced Edema in the Diabetes REduction Assessment with ramipril and rosiglitazone Medication (DREAM) Study. Bailey SD, et al. Diabetes Care, 2010 Jul 13. PMID 20628086. Gene-centric association signals for lipids and apolipoproteins identified

via the HumanCVD BeadChip. Talmud PJ, et al. Am J Hum Genet, 2009 Nov. PMID 19913121. Defining the human deubiquitinating enzyme interaction landscape. Sowa ME, et al. Cell, 2009 Jul 23. PMID 19615732. Large-scale mapping of human protein-protein interactions by mass spectrometry. Ewing RM, et al. Mol Syst Biol, 2007. PMID 17353931. Global, in vivo, and site-specific phosphorylation dynamics in signaling networks. Olsen JV, et al. Cell, 2006 Nov 3. PMID 17081983.

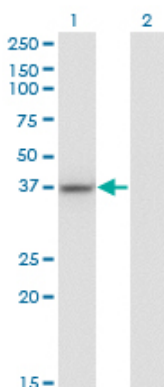
## Images



Antibody Reactive Against Recombinant Protein. Western Blot detection against Immunogen (38.21 kDa) .



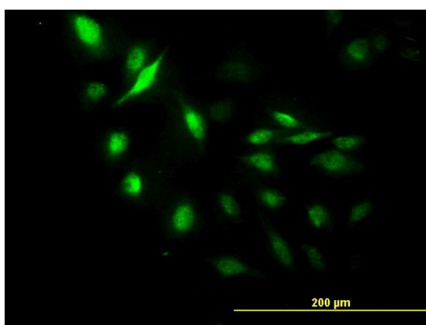
LUC7L monoclonal antibody (M05), clone 2D10 Western Blot analysis of LUC7L expression in IMR-32 (Cat # AT2748a )



Western Blot analysis of LUC7L expression in transfected 293T cell line by LUC7L monoclonal antibody (M05), clone 2D10.

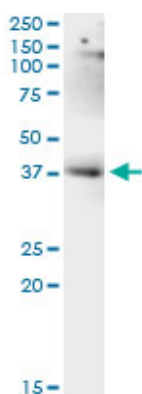
Lane 1: LUC7L transfected lysate (Predicted MW: 38.4 kDa).

Lane 2: Non-transfected lysate.



Immunofluorescence of monoclonal antibody to LUC7L on HeLa cell. [antibody concentration 10 ug/ml]

Immunoprecipitation of LUC7L transfected lysate using



anti-LUC7L monoclonal antibody and Protein A Magnetic Bead ([U0007](#)), and immunoblotted with LUC7L monoclonal antibody.

Please note: All products are 'FOR RESEARCH USE ONLY. NOT FOR USE IN DIAGNOSTIC OR THERAPEUTIC PROCEDURES'.