

LW-1 Antibody (monoclonal) (M01)

Mouse monoclonal antibody raised against a full length recombinant LW-1.

Catalog # AT2749a

Product Information

Application	WB, E
Primary Accession	Q9UBD0
Other Accession	BC021706
Reactivity	Human
Host	mouse
Clonality	monoclonal
Isotype	IgG1 Kappa
Clone Names	1D7
Calculated MW	46742

Additional Information

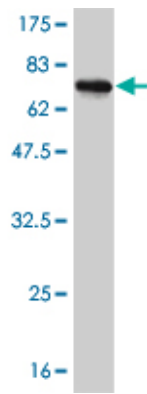
Gene ID	100130086;100506164
Other Names	Heat shock transcription factor, X-linked, HSF1, LW-1
Target/Specificity	LW-1 (AAH21706, 1 a.a. ~ 423 a.a) full-length recombinant protein with GST tag. MW of the GST tag alone is 26 KDa.
Dilution	WB~~1:500~1000 E~~N/A
Format	Clear, colorless solution in phosphate buffered saline, pH 7.2 .
Storage	Store at -20°C or lower. Aliquot to avoid repeated freezing and thawing.
Precautions	LW-1 Antibody (monoclonal) (M01) is for research use only and not for use in diagnostic or therapeutic procedures.

References

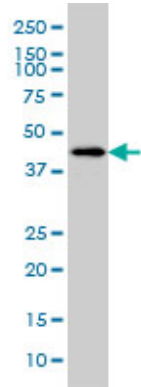
A protein-protein interaction network for human inherited ataxias and disorders of Purkinje cell degeneration. Lim J, et al. Cell, 2006 May 19. PMID 16713569. Molecular characterization of heat shock-like factor encoded on the human Y chromosome, and implications for male infertility. Shinka T, et al. Biol Reprod, 2004 Jul. PMID 15044259. Generation and initial analysis of more than 15,000 full-length human and mouse cDNA sequences. Strausberg RL, et al. Proc Natl Acad Sci U S A, 2002 Dec 24. PMID 12477932.

Images

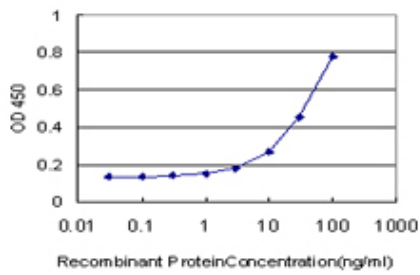
Antibody Reactive Against Recombinant Protein. Western



Blot detection against Immunogen (72.27 KDa) .



LW-1 monoclonal antibody (M01), clone 1D7 Western Blot analysis of LW-1 expression in A-431 (Cat # AT2749a)



Detection limit for recombinant GST tagged LW-1 is approximately 3ng/ml as a capture antibody.

Please note: All products are 'FOR RESEARCH USE ONLY. NOT FOR USE IN DIAGNOSTIC OR THERAPEUTIC PROCEDURES'.