

## LW-1 Antibody (monoclonal) (M02)

Mouse monoclonal antibody raised against a full length recombinant LW-1.

Catalog # AT2750a

### Product Information

---

|                          |                          |
|--------------------------|--------------------------|
| <b>Application</b>       | WB, E                    |
| <b>Primary Accession</b> | <a href="#">Q9UBD0</a>   |
| <b>Other Accession</b>   | <a href="#">BC021706</a> |
| <b>Reactivity</b>        | Human                    |
| <b>Host</b>              | mouse                    |
| <b>Clonality</b>         | monoclonal               |
| <b>Isotype</b>           | IgG                      |
| <b>Clone Names</b>       | 3E8                      |
| <b>Calculated MW</b>     | 46742                    |

### Additional Information

---

|                           |  |
|---------------------------|--|
| <b>Gene ID</b>            | 100130086;100506164  |
| <b>Other Names</b>        | Heat shock transcription factor, X-linked, HSF1, LW-1  |
| <b>Target/Specificity</b> | LW-1 (AAH21706, 1 a.a. ~ 423 a.a) full-length recombinant protein with GST tag. MW of the GST tag alone is 26 KDa. |
| <b>Dilution</b>           | WB~~1:500~1000 E~~N/A  |
| <b>Format</b>             | Clear, colorless solution in phosphate buffered saline, pH 7.2 .   |
| <b>Storage</b>            | Store at -20°C or lower. Aliquot to avoid repeated freezing and thawing.   |
| <b>Precautions</b>        | LW-1 Antibody (monoclonal) (M02) is for research use only and not for use in diagnostic or therapeutic procedures. |

### References

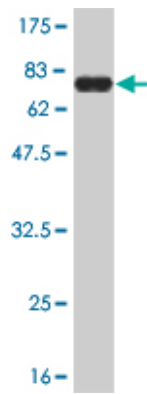
---

A protein-protein interaction network for human inherited ataxias and disorders of Purkinje cell degeneration. Lim J, et al. Cell, 2006 May 19. PMID 16713569. Molecular characterization of heat shock-like factor encoded on the human Y chromosome, and implications for male infertility. Shinka T, et al. Biol Reprod, 2004 Jul. PMID 15044259. Generation and initial analysis of more than 15,000 full-length human and mouse cDNA sequences. Strausberg RL, et al. Proc Natl Acad Sci U S A, 2002 Dec 24. PMID 12477932.

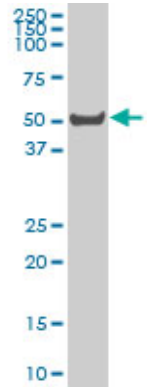
### Images

---

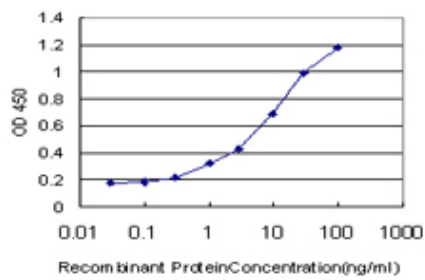
Antibody Reactive Against Recombinant Protein. Western



Blot detection against Immunogen (72.27 KDa) .



LW-1 monoclonal antibody (M02), clone 3E7 Western Blot analysis of LW-1 expression in Hela S3 NE ( (Cat # AT2750a )



Detection limit for recombinant GST tagged LW-1 is approximately 0.3ng/ml as a capture antibody.

Please note: All products are 'FOR RESEARCH USE ONLY. NOT FOR USE IN DIAGNOSTIC OR THERAPEUTIC PROCEDURES'.