

LY6H Antibody (monoclonal) (M01)

Mouse monoclonal antibody raised against a full length recombinant LY6H.

Catalog # AT2751a

Product Information

Application	WB, IHC
Primary Accession	O94772
Other Accession	BC028894
Reactivity	Human
Host	mouse
Clonality	monoclonal
Isotype	IgG1 Kappa
Clone Names	3E11
Calculated MW	14669

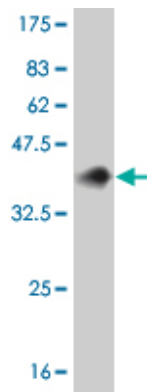
Additional Information

Gene ID	4062
Other Names	Lymphocyte antigen 6H, Ly-6H, LY6H
Target/Specificity	LY6H (AAH28894, 26 a.a. ~ 140 a.a) full-length recombinant protein with GST tag. MW of the GST tag alone is 26 KDa.
Dilution	WB~~1:500~1000 IHC~~1:100~500
Format	Clear, colorless solution in phosphate buffered saline, pH 7.2 .
Storage	Store at -20°C or lower. Aliquot to avoid repeated freezing and thawing.
Precautions	LY6H Antibody (monoclonal) (M01) is for research use only and not for use in diagnostic or therapeutic procedures.

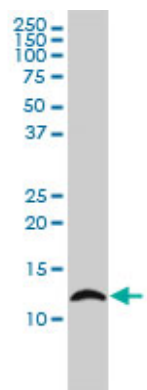
References

New genetic associations detected in a host response study to hepatitis B vaccine. Davila S, et al. Genes Immun, 2010 Apr. PMID 20237496. A human protein-protein interaction network: a resource for annotating the proteome. Stelzl U, et al. Cell, 2005 Sep 23. PMID 16169070. The status, quality, and expansion of the NIH full-length cDNA project: the Mammalian Gene Collection (MGC). Gerhard DS, et al. Genome Res, 2004 Oct. PMID 15489334. Sequence comparison of human and mouse genes reveals a homologous block structure in the promoter regions. Suzuki Y, et al. Genome Res, 2004 Sep. PMID 15342556. Generation and initial analysis of more than 15,000 full-length human and mouse cDNA sequences. Strausberg RL, et al. Proc Natl Acad Sci U S A, 2002 Dec 24. PMID 12477932.

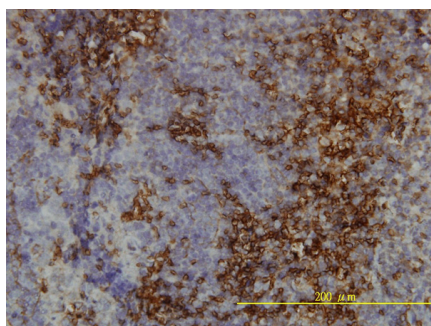
Images



Antibody Reactive Against Recombinant Protein. Western Blot detection against Immunogen (38.39 KDa) .



LY6H monoclonal antibody (M01), clone 3E10 Western Blot analysis of LY6H expression in K-562 (Cat # AT2751a)



Immunoperoxidase of monoclonal antibody to LY6H on formalin-fixed paraffin-embedded human tonsil tissue. [antibody concentration 2 ug/ml]

Please note: All products are 'FOR RESEARCH USE ONLY. NOT FOR USE IN DIAGNOSTIC OR THERAPEUTIC PROCEDURES'.