

# MAF Antibody (monoclonal) (M01)

Mouse monoclonal antibody raised against a partial recombinant MAF.

Catalog # AT2760a

## Product Information

---

<b>Application</b>	WB, IF, E
<b>Primary Accession</b>	<a href="#">O75444</a>
<b>Other Accession</b>	<a href="#">NM_005360</a>
<b>Reactivity</b>	Human
<b>Host</b>	mouse
<b>Clonality</b>	monoclonal
<b>Isotype</b>	IgG2b Kappa
<b>Clone Names</b>	6B6
<b>Calculated MW</b>	38492

## Additional Information

---

<b>Gene ID</b>	4094
<b>Other Names</b>	Transcription factor Maf, Proto-oncogene c-Maf, V-maf musculoaponeurotic fibrosarcoma oncogene homolog, MAF
<b>Target/Specificity</b>	MAF (NP_005351, 304 a.a. ~ 403 a.a) partial recombinant protein with GST tag. MW of the GST tag alone is 26 KDa.
<b>Dilution</b>	WB~~1:500~1000 IF~~1:50~200 E~~N/A
<b>Format</b>	Clear, colorless solution in phosphate buffered saline, pH 7.2 .
<b>Storage</b>	Store at -20°C or lower. Aliquot to avoid repeated freezing and thawing.
<b>Precautions</b>	MAF Antibody (monoclonal) (M01) is for research use only and not for use in diagnostic or therapeutic procedures.

## Background

---

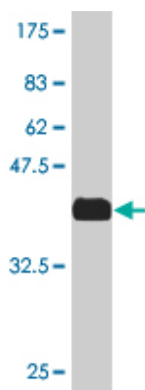
The protein encoded by this gene is a DNA-binding, leucine zipper-containing transcription factor that acts as a homodimer or as a heterodimer. Depending on the binding site and binding partner, the encoded protein can be a transcriptional activator or repressor. This protein plays a role in the regulation of several cellular processes, including embryonic lens fiber cell development, increased T-cell susceptibility to apoptosis, and chondrocyte terminal differentiation. Defects in this gene are a cause of juvenile-onset pulverulent cataract as well as congenital cerulean cataract 4 (CCA4). Two transcript variants encoding different isoforms have been found for this gene.

## References

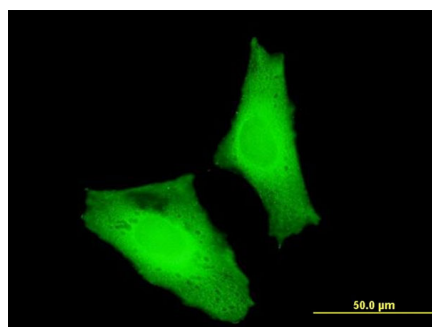
---

Genetic variants that affect length/height in infancy/early childhood in Vietnamese-Korean families. Kim HN, et al. J Hum Genet, 2010 Jul 29. PMID 20668459. Evaluating the discriminative power of multi-trait genetic risk scores for type 2 diabetes in a northern Swedish population. Fontaine-Bisson B, et al. Diabetologia, 2010 Oct. PMID 20571754. SUMOylation attenuates c-Maf-dependent IL-4 expression. Lin BS, et al. Eur J Immunol, 2010 Apr. PMID 20127678. KSHV-encoded miRNAs target MAF to induce endothelial cell reprogramming. Hansen A, et al. Genes Dev, 2010 Jan 15. PMID 20080955. Transcriptional activation of human MMP-13 gene expression by c-Maf in osteoarthritic chondrocyte. Li T, et al. Connect Tissue Res, 2010. PMID 20067416.

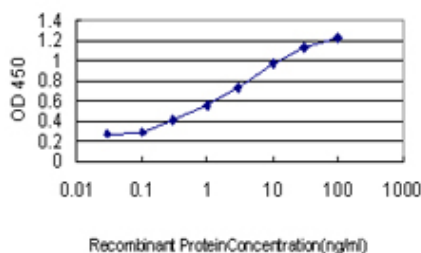
## Images



Antibody Reactive Against Recombinant Protein. Western Blot detection against Immunogen (36.74 KDa) .



Immunofluorescence of monoclonal antibody to MAF on HeLa cell . [antibody concentration 10 ug/ml]



Detection limit for recombinant GST tagged MAF is approximately 0.1 ng/ml as a capture antibody.

Please note: All products are 'FOR RESEARCH USE ONLY. NOT FOR USE IN DIAGNOSTIC OR THERAPEUTIC PROCEDURES'.