

MAML2 Antibody (monoclonal) (M03)

Mouse monoclonal antibody raised against a partial recombinant MAML2.

Catalog # AT2769a

Product Information

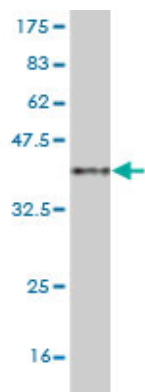
Application	WB, E
Primary Accession	Q8IZL2
Other Accession	NM_032427
Reactivity	Human
Host	mouse
Clonality	monoclonal
Isotype	IgG2a Kappa
Clone Names	4A1
Calculated MW	125197

Additional Information

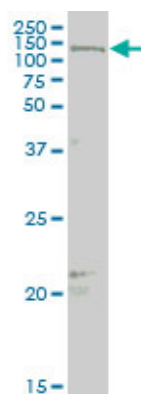
Gene ID	84441
Other Names	Mastermind-like protein 2, Mam-2, MAML2, KIAA1819
Target/Specificity	MAML2 (NP_115803, 796 a.a. ~ 894 a.a) partial recombinant protein with GST tag. MW of the GST tag alone is 26 KDa.
Dilution	WB~~1:500~1000 E~~N/A
Format	Clear, colorless solution in phosphate buffered saline, pH 7.2 .
Storage	Store at -20°C or lower. Aliquot to avoid repeated freezing and thawing.
Precautions	MAML2 Antibody (monoclonal) (M03) is for research use only and not for use in diagnostic or therapeutic procedures.

References

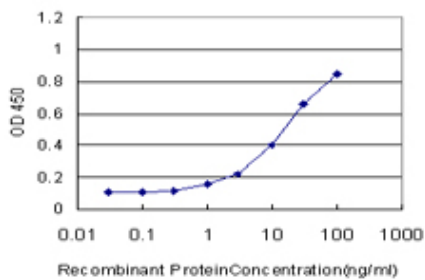
A reappraisal of the MECT1/MAML2 translocation in salivary mucoepidermoid carcinomas. Seethala RR, et al. Am J Surg Pathol, 2010 Aug. PMID 20588178. Personalized smoking cessation: interactions between nicotine dose, dependence and quit-success genotype score. Rose JE, et al. Mol Med, 2010 Jul-Aug. PMID 20379614. Clinicopathological significance of the CRTC3-MAML2 fusion transcript in mucoepidermoid carcinoma. Nakayama T, et al. Mod Pathol, 2009 Dec. PMID 19749740. Prognostic significance of p27Kip1, Ki-67, and CRTC1-MAML2 fusion transcript in mucoepidermoid carcinoma: a molecular and clinicopathologic study of 101 cases. Miyabe S, et al. J Oral Maxillofac Surg, 2009 Jul. PMID 19531414. A link between the expression of the stem cell marker HMGA2, grading, and the fusion CRTC1-MAML2 in mucoepidermoid carcinoma. Fehr A, et al. Genes Chromosomes Cancer, 2009 Sep. PMID 19521953.



Antibody Reactive Against Recombinant Protein.Western Blot detection against Immunogen (36.63 KDa) .



MAML2 monoclonal antibody (M03), clone 4A1 Western Blot analysis of MAML2 expression in MCF-7 ((Cat # AT2769a)



Detection limit for recombinant GST tagged MAML2 is approximately 1ng/ml as a capture antibody.

Please note: All products are 'FOR RESEARCH USE ONLY. NOT FOR USE IN DIAGNOSTIC OR THERAPEUTIC PROCEDURES'.