

MAPRE2 Antibody (monoclonal) (M03)

Mouse monoclonal antibody raised against a partial recombinant MAPRE2.

Catalog # AT2798a

Product Information

Application	WB, IHC, IF
Primary Accession	Q15555
Other Accession	NM_014268
Reactivity	Human
Host	mouse
Clonality	monoclonal
Isotype	IgG1 Kappa
Clone Names	4D7
Calculated MW	37031

Additional Information

Gene ID	10982
Other Names	Microtubule-associated protein RP/EB family member 2, APC-binding protein EB2, End-binding protein 2, EB2, MAPRE2, RP1
Target/Specificity	MAPRE2 (NP_055083, 1 a.a. ~ 62 a.a) partial recombinant protein with GST tag. MW of the GST tag alone is 26 KDa.
Dilution	WB~~1:500~1000 IHC~~1:100~500 IF~~1:50~200
Format	Clear, colorless solution in phosphate buffered saline, pH 7.2 .
Storage	Store at -20°C or lower. Aliquot to avoid repeated freezing and thawing.
Precautions	MAPRE2 Antibody (monoclonal) (M03) is for research use only and not for use in diagnostic or therapeutic procedures.

Background

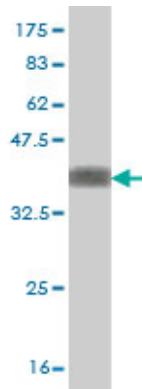
The protein encoded by this gene shares significant homology to the adenomatous polyposis coli (APC) protein-binding EB1 gene family. The function of this protein is unknown; however, its homology suggests involvement in tumorigenesis of colorectal cancers and proliferative control of normal cells. This gene may belong to the intermediate/early gene family, involved in the signal transduction cascade downstream of the TCR. Alternative splicing results in multiple transcript variants.

References

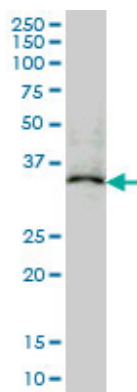
Personalized smoking cessation: interactions between nicotine dose, dependence and quit-success genotype

score. Rose JE, et al. Mol Med, 2010 Jul-Aug. PMID 20379614. Molecular insights into mammalian end-binding protein heterodimerization. De Groot CO, et al. J Biol Chem, 2010 Feb 19. PMID 20008324. The microtubule-associated protein MAPRE2 is involved in perineural invasion of pancreatic cancer cells. Abiatari I, et al. Int J Oncol, 2009 Nov. PMID 19787265. Interactions between EB1 and microtubules: dramatic effect of affinity tags and evidence for cooperative behavior. Zhu ZC, et al. J Biol Chem, 2009 Nov 20. PMID 19778897. Suppression of microtubule dynamic instability by the +TIP protein EB1 and its modulation by the CAP-Gly domain of p150glued. Manna T, et al. Biochemistry, 2008 Jan 15. PMID 18081319.

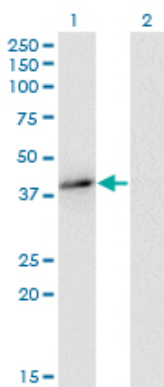
Images



Antibody Reactive Against Recombinant Protein. Western Blot detection against Immunogen (32.93 KDa) .



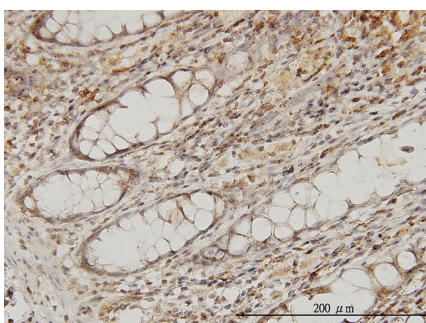
MAPRE2 monoclonal antibody (M03), clone 4D7 Western Blot analysis of MAPRE2 expression in K-562 (Cat # AT2798a)



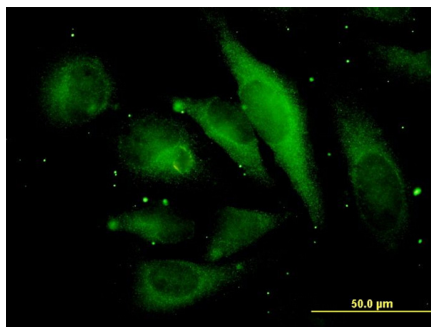
Western Blot analysis of MAPRE2 expression in transfected 293T cell line by MAPRE2 monoclonal antibody (M03), clone 4D7.

Lane 1: MAPRE2 transfected lysate (Predicted MW: 37 KDa).

Lane 2: Non-transfected lysate.



Immunoperoxidase of monoclonal antibody to MAPRE2 on formalin-fixed paraffin-embedded human colon. [antibody concentration 3 ug/ml]



Immunofluorescence of monoclonal antibody to MAPRE2 on HeLa cell. [antibody concentration 35 ug/ml]

Please note: All products are 'FOR RESEARCH USE ONLY. NOT FOR USE IN DIAGNOSTIC OR THERAPEUTIC PROCEDURES'.