

MARS Antibody (monoclonal) (M01)

Mouse monoclonal antibody raised against a partial recombinant MARS.

Catalog # AT2805a

Product Information

Application	WB, IF, E
Primary Accession	P56192
Other Accession	NM_004990
Reactivity	Human
Host	mouse
Clonality	monoclonal
Isotype	IgG1 Kappa
Clone Names	5G5
Calculated MW	101116

Additional Information

Gene ID	4141
Other Names	Methionine--tRNA ligase, cytoplasmic, Methionyl-tRNA synthetase, MetRS, MARS
Target/Specificity	MARS (NP_004981, 801 a.a. ~ 899 a.a) partial recombinant protein with GST tag. MW of the GST tag alone is 26 KDa.
Dilution	WB~~1:500~1000 IF~~1:50~200 E~~N/A
Format	Clear, colorless solution in phosphate buffered saline, pH 7.2 .
Storage	Store at -20°C or lower. Aliquot to avoid repeated freezing and thawing.
Precautions	MARS Antibody (monoclonal) (M01) is for research use only and not for use in diagnostic or therapeutic procedures.

Background

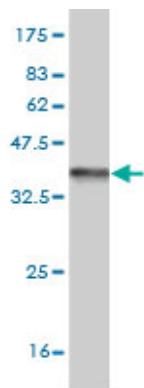
Aminoacyl-tRNA synthetases are a class of enzymes that charge tRNAs with their cognate amino acids. The protein encoded by this gene belongs to the class I family of tRNA synthetases.

References

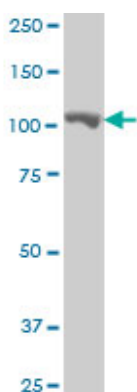
Variation at the NFATC2 Locus Increases the Risk of Thiazolinedinedione-Induced Edema in the Diabetes REduction Assessment with ramipril and rosiglitazone Medication (DREAM) Study. Bailey SD, et al. Diabetes Care, 2010 Jul 13. PMID 20628086. Gene-centric association signals for lipids and apolipoproteins identified via the HumanCVD BeadChip. Talmud PJ, et al. Am J Hum Genet, 2009 Nov. PMID 19913121. Polymorphisms

in mitochondrial genes and prostate cancer risk. Wang L, et al. Cancer Epidemiol Biomarkers Prev, 2008 Dec. PMID 19064571. Two non-redundant fragments in the N-terminal peptide of human cytosolic methionyl-tRNA synthetase were indispensable for the multi-synthetase complex incorporation and enzyme activity. He R, et al. Biochim Biophys Acta, 2009 Feb. PMID 19064003. Toward a confocal subcellular atlas of the human proteome. Barbe L, et al. Mol Cell Proteomics, 2008 Mar. PMID 18029348.

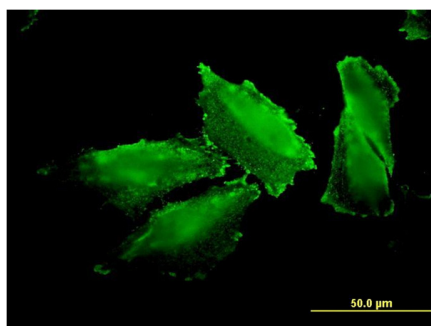
Images



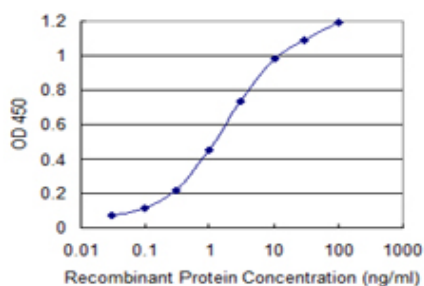
Antibody Reactive Against Recombinant Protein. Western Blot detection against Immunogen (36.63 kDa) .



MARS monoclonal antibody (M01), clone 5G5 Western Blot analysis of MARS expression in HepG2 (Cat # AT2805a)



Immunofluorescence of monoclonal antibody to MARS on HepG2 cell. [antibody concentration 10 ug/ml]



Detection limit for recombinant GST tagged MARS is 0.03 ng/ml as a capture antibody.

Please note: All products are 'FOR RESEARCH USE ONLY. NOT FOR USE IN DIAGNOSTIC OR THERAPEUTIC PROCEDURES'.