

MASA Antibody (monoclonal) (M01)

Mouse monoclonal antibody raised against a full length recombinant MASA.

Catalog # AT2806a

Product Information

Application	WB
Primary Accession	Q9UHY7
Other Accession	BC001317
Reactivity	Human
Host	mouse
Clonality	monoclonal
Isotype	IgG1 kappa
Clone Names	3C1-1D5
Calculated MW	28933

Additional Information

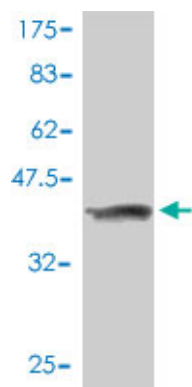
Gene ID	58478
Other Names	Enolase-phosphatase E1 {ECO:0000255 HAMAP-Rule:MF_03117}, 31377 {ECO:0000255 HAMAP-Rule:MF_03117}, 3-diketo-5-methylthio-1-phosphopentane phosphatase {ECO:0000255 HAMAP-Rule:MF_03117}, MASA homolog {ECO:0000255 HAMAP-Rule:MF_03117}, ENOPH1 {ECO:0000255 HAMAP-Rule:MF_03117}
Target/Specificity	MASA (AAH01317, 1 a.a. ~ 115 a.a) full-length recombinant protein with GST tag. MW of the GST tag alone is 26 KDa.
Dilution	WB~~1:500~1000
Format	Clear, colorless solution in phosphate buffered saline, pH 7.2 .
Storage	Store at -20°C or lower. Aliquot to avoid repeated freezing and thawing.
Precautions	MASA Antibody (monoclonal) (M01) is for research use only and not for use in diagnostic or therapeutic procedures.

References

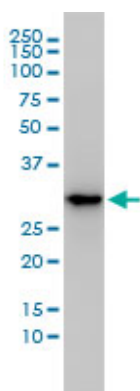
Diversification of transcriptional modulation: large-scale identification and characterization of putative alternative promoters of human genes. Kimura K, et al. Genome Res, 2006 Jan. PMID 16344560. A human protein-protein interaction network: a resource for annotating the proteome. Stelzl U, et al. Cell, 2005 Sep 23. PMID 16169070. Crystal structure of human E1 enzyme and its complex with a substrate analog reveals the mechanism of its phosphatase/enolase activity. Wang H, et al. J Mol Biol, 2005 May 13. PMID

15843022.The status, quality, and expansion of the NIH full-length cDNA project: the Mammalian Gene Collection (MGC). Gerhard DS, et al. Genome Res, 2004 Oct. PMID 15489334.Complete sequencing and characterization of 21,243 full-length human cDNAs. Ota T, et al. Nat Genet, 2004 Jan. PMID 14702039.

Images



Antibody Reactive Against Recombinant Protein.Western Blot detection against Immunogen (38.39 KDa) .



MASA monoclonal antibody (M01), clone 3C1-1D5
Western Blot analysis of MASA expression in HL-60 ((Cat # AT2806a)

Please note: All products are 'FOR RESEARCH USE ONLY. NOT FOR USE IN DIAGNOSTIC OR THERAPEUTIC PROCEDURES'.