

## MCC Antibody (monoclonal) (M01)

Mouse monoclonal antibody raised against a partial recombinant MCC.

Catalog # AT2815a

### Product Information

---

<b>Application</b>	WB, E
<b>Primary Accession</b>	<a href="#">P23508</a>
<b>Other Accession</b>	<a href="#">BC009279</a>
<b>Reactivity</b>	Human
<b>Host</b>	mouse
<b>Clonality</b>	monoclonal
<b>Isotype</b>	IgG1 Kappa
<b>Clone Names</b>	1A7
<b>Calculated MW</b>	93027

### Additional Information

---

<b>Gene ID</b>	4163
<b>Other Names</b>	Colorectal mutant cancer protein, Protein MCC, MCC
<b>Target/Specificity</b>	MCC (AAH09279, 31 a.a. ~ 130 a.a) partial recombinant protein with GST tag. MW of the GST tag alone is 26 KDa.
<b>Dilution</b>	WB~~1:500~1000 E~~N/A
<b>Format</b>	Clear, colorless solution in phosphate buffered saline, pH 7.2 .
<b>Storage</b>	Store at -20°C or lower. Aliquot to avoid repeated freezing and thawing.
<b>Precautions</b>	MCC Antibody (monoclonal) (M01) is for research use only and not for use in diagnostic or therapeutic procedures.

### Background

---

This gene is a candidate colorectal tumor suppressor gene that is thought to negatively regulate cell cycle progression. The orthologous gene in the mouse expresses a phosphoprotein associated with the plasma membrane and membrane organelles, and overexpression of the mouse protein inhibits entry into S phase. Multiple transcript variants encoding different isoforms have been found for this gene.

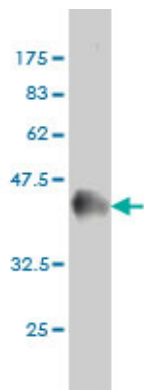
### References

---

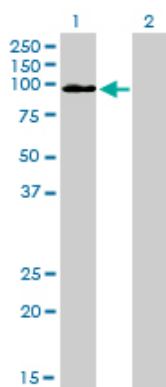
Personalized smoking cessation: interactions between nicotine dose, dependence and quit-success genotype score. Rose JE, et al. Mol Med, 2010 Jul-Aug. PMID 20379614. Association of genetic variants with hemorrhagic stroke in Japanese individuals. Yoshida T, et al. Int J Mol Med, 2010 Apr. PMID

20198315.Assessment of a polymorphism of SDK1 with hypertension in Japanese Individuals. Oguri M, et al. Am J Hypertens, 2010 Jan. PMID 19851296.MCC, a new interacting protein for Scrib, is required for cell migration in epithelial cells. Arnaud C, et al. FEBS Lett, 2009 Jul 21. PMID 19555689.Mutated in colorectal cancer, a putative tumor suppressor for serrated colorectal cancer, selectively represses beta-catenin-dependent transcription. Fukuyama R, et al. Oncogene, 2008 Oct 9. PMID 18591935.

## Images

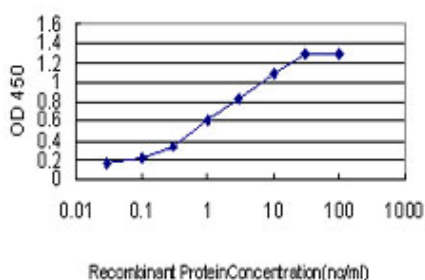


Antibody Reactive Against Recombinant Protein.Western Blot detection against Immunogen (36.63 KDa) .

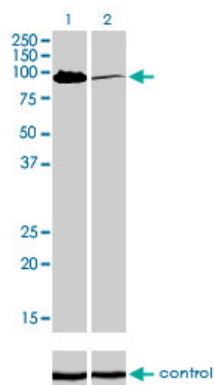


Western Blot analysis of MCC expression in transfected 293T cell line by MCC monoclonal antibody (M01), clone 1A7.

Lane 1: MCC transfected lysate(93.1 KDa).  
Lane 2: Non-transfected lysate.



Detection limit for recombinant GST tagged MCC is approximately 0.03ng/ml as a capture antibody.



Western blot analysis of MCC over-expressed 293 cell line, cotransfected with MCC Validated Chimera RNAi (Cat # AT2815a )